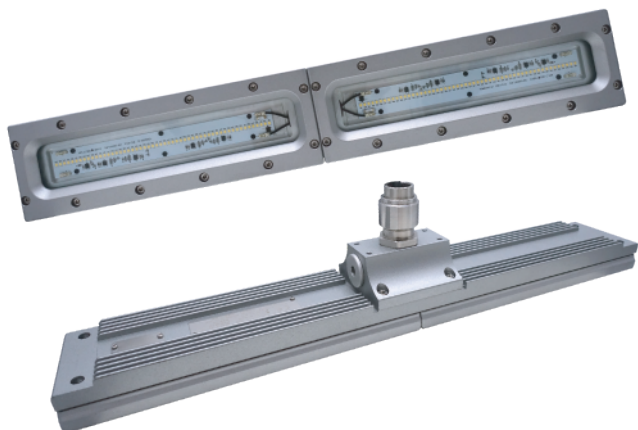


L1319

Universal Explosion-proof LED Lighting



Net Weight: 7.4 kg (16.3 lb)

Zone
1

Zone
2

Zone
21

Zone
22

IP67

NEMA
6

Protection

- Ex db IIC T6 Gb
- Ex tb IIIC T85°C Db
- Ⓜ II 2 G Ex db IIC T6 Gb
- Ⓜ II 2 D Ex tb IIIC T85°C Db

Standards

IEC 60079-0
IEC 60079-1
IEC 60079-31
EN 60079-0
EN 60079-1
EN 60079-31

Light Features

- Die-cast aluminum fixture for LED heat dissipation and thermal control.
- Applicable to high temperature environment
- Suitable for tunnel installation

Technical Data

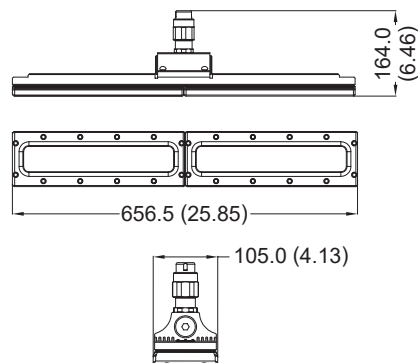
Rated Voltage (±10%)	100V / 110V / 200V / 220V AC		
Watts (±10%)	40W / 60W		
Amps	40W 100V:0.40A, 110V: 0.36A, 200V:0.20A, 220V: 0.18A 60W 100V:0.60A, 110V: 0.54A, 200V:0.30A, 220V: 0.27A		
Color of LED Light	3000K (Warm White) / 5000K (Cool White)		
Ambient Temperature	-40°C ~ +55°C, T6		
Power Factor	cos≥0.9		
CRI	Cool White≥70 / Warm White≥80		
Lumen (±10%)	SMD	40W	60W
	3000K	3600lm	5400lm
	5000K	4000lm	6000lm
Beam Angle	X-116° / Y-113°		
Frequency	50 / 60 Hz		
Degree of Protection	IP67 / NEMA 6		
Material	• Enclosure • Glass	Aluminum alloy Tempered glass	
LED Service Life	60,000 hrs		
Entrance Thread	3 × M25		

164.0
(6.46)

656.5 (25.85)

105.0 (4.13)

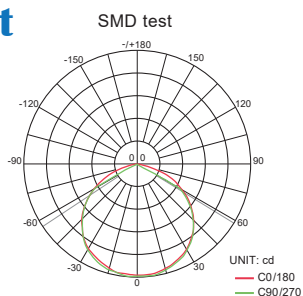
Dimension in Millimeters (inches)



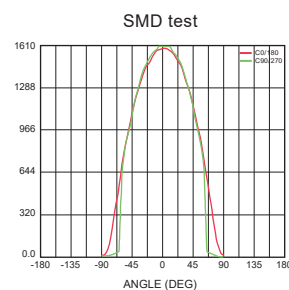
Dimension in Millimeters (inches)

Optical Report

Polar Luminous
Intensity Distribution



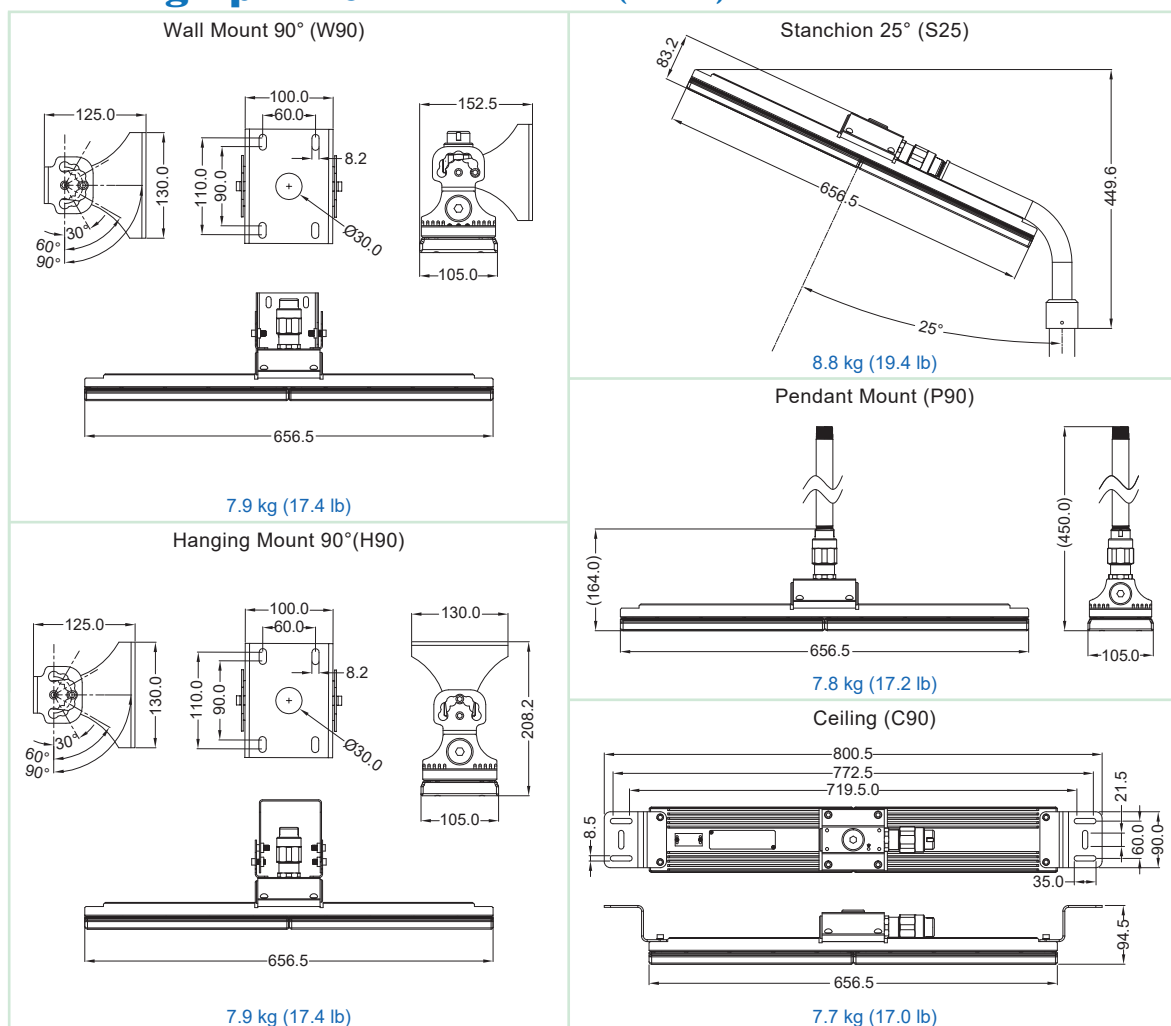
Luminous
Intensity Distribution Diagram



Model Code

THT	E	1319	Z	C	H	C	2	D0	C90
Brand, THT=Top Hi-Tech Co, Ltd.	Protection type of luminaire, E=Explosion proof luminaires	Model Name, 1319=Model L1319 series	Sub-series designation, Z=No sub-series under this model	Type of top cover, C=Top cover with opening	Type of LED model, H=SMD LED Module	C.C.T., C=Cool White, W=Warm White	Voltage, 1=110V, 2=220V, 4=100V, 5=200V	Wattage, D0=40W, F0=60W	Mounting bracket type W90=Wall Mount 90° H90=Hanging Mount 90° S25=Stanchion 25° P90=Pendant C90=Ceiling

Mounting Option & Dimensions (All in mm)



Applicable Area

- Oil Refinery Complex
- Painting Facility
- Transporting Liquefied
- Offshore Platform
- Petrochemical Complex
- Transporting Nature Gas
- Petroleum Gas
- (Oil and Natural Gas)