

L1217

Universal Explosion-proof LED Lighting



Zone
1

Zone
2

Zone
21

Zone
22

IP67

NEMA
6

Protection

- Ex d IIB + H₂ T₆...T₄ Gb
- Ex tb IIIC T₁₀₅°C Db
- Ⓜ II 2 G Ex d IIB + H₂ T₆...T₄ Gb
- Ⓜ II 2 D Ex tb IIIC T₁₀₅°C Db

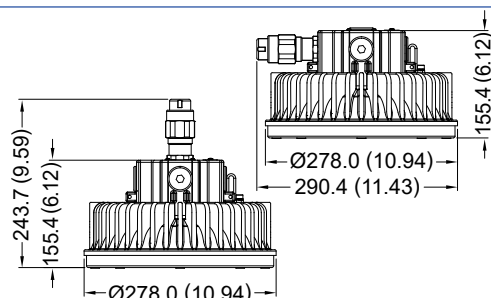
Standards

IEC 60079-0
IEC 60079-1
IEC 60079-31
EN 60079-0
EN 60079-1
EN 60079-31

Net Weight: 11.0 kg (24.2 lb)

Technical Data

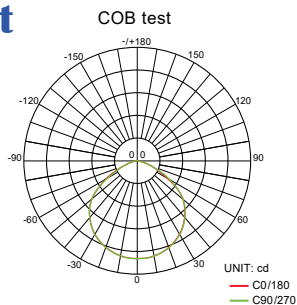
Rated Voltage (±10%)	24V / 100V / 110V / 120V / 200V / 208V / 220V AC		
Watts (±10%)	110W / 120W (Watts of 24V are different, please contact us for details.)		
Amps	110W 24V: 4.58A, 100V: 1.10A, 110V: 1.00A, 120V: 0.92A, 200V: 0.55A, 208V: 0.53A, 220V: 0.50A 120W 24V: 5.00A, 100V: 1.20A, 110V: 1.09A, 120V: 1.00A, 200V: 0.60A, 208V: 0.58A, 220V: 0.55A		
Color of LED Light	3000K (Warm White) / 5000K (Cool White)		
Ambient Temperature	-20°C ~ +40°C, 24V only: T6, W.W. / C.W(60Hz): T5, C.W.(50Hz): T4		
Power Factor	cos≥ 0.9		
CRI	Cool White≥ 70 / Warm White≥ 80		
Lumen (±10%)	COB	110W	120W
	3000K	9900lm	12000lm
	5000K	11000lm	13200lm
Beam Angle	X-110° / Y-110°		
Frequency	50 / 60 Hz		
Degree of Protection	IP67 / NEMA 6		
Material	• Enclosure • Glass	Aluminum alloy Tempered glass	
LED Service Life	60,000 hrs		
Entrance Thread	4×M25 or 1×G1-1/2"		



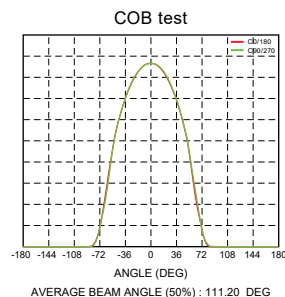
Dimension in Millimeters (inches)

Optical Report

Polar Luminous Intensity Distribution



Luminous Intensity Distribution Diagram



Model Code

THT-EX	1217	C	A	P	E	6	A	H90
		①	②				③	④

① C.C.T.

C=Cool White
W=Warm White

② Voltage

A=24V, B=100V
C=110V, F=120V
D=200V, E=220V
G=208V

③ Wattage

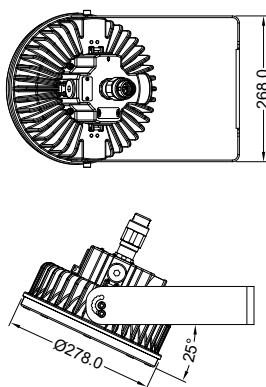
A=110W (10W+20W LED)
2=120W (20W LED)

④ Mounting Bracket Type

W25/90=Wall Mount 25°/90°
S25/90=Stanchion 25°/90°
P90=Pendant
H90=Hanging Mount 90°
RO=Projection

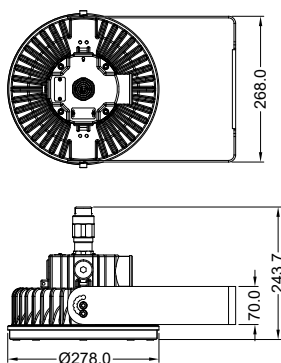
Mounting Option & Dimensions (All in mm)

Wall Mount 25° (W25)



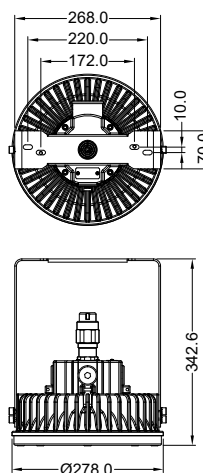
12.1 kg (26.7 lb)

Wall Mount 90° (W90)



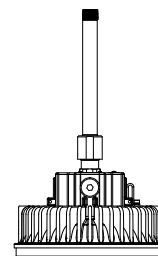
12.1 kg (26.7 lb)

Hanging Mount 90° (H90)



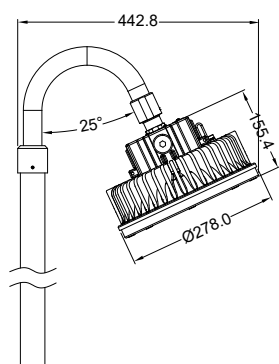
12.1 kg (26.7 lb)

Pendant (P90)



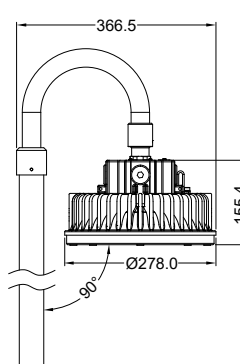
11.3 kg (24.9 lb)

Stanchion 25° (S25)



12.0 kg (26.5 lb)

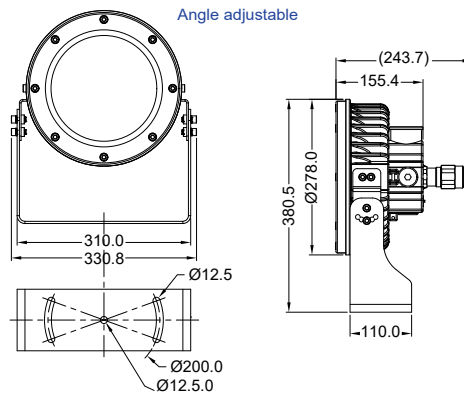
Stanchion 90° (S90)



12.1 kg (26.7 lb)

Projection (RO)

Angle adjustable



12.3 kg (27.1 lb)

Applicable Area

- Oil Refinery Complex
- Petrochemical Complex
- Painting Facility
- Transporting Nature Gas
- Transproting Liquefied Petroleum Gas
- Offshore Platform (Oil and Natural Gas)