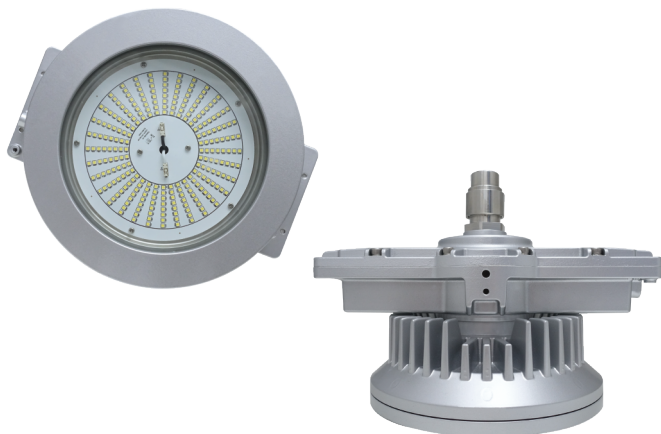


L1815C

Luminaires for use in Hazardous Locations



CID2
Group
A, B, C, D

IP67

NEMA
6

Protection

- Class I, Division 2
Group A, B, C, D

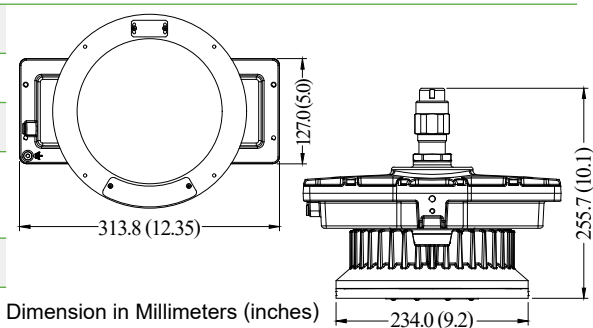
Standards

UL 844
UL 1598
CSA C22.2 No. 137-18
CSA C22.2 250.0-18

Net Weight: 9.3 kg (20.5 lb)

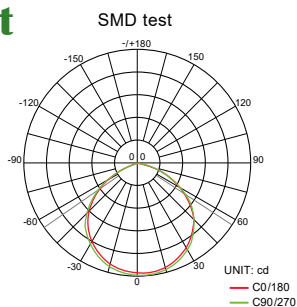
Technical Data

Rated Voltage (±10%)	120V ~ 277V AC / 200V~480V (Full Voltage)		
Watts (±10%)	120W / 150W		
Amps	120W 0.25A ~ 1.00A, 150W 0.31A ~ 1.25A		
Color of LED Light	2700K (Warm White) / 6500K (Cool White)		
Ambient Temperature	-20°C ~ +40°C, T4		
Power Factor	cos ≥ 0.9		
CRI	Cool White ≥ 70 / Warm White ≥ 78		
Lumen (±10%)	SMD	120W	150W
	2700K	14496lm	17307lm
	6500K	15239lm	18099lm
Beam Angle	X-110° / Y-110°		
Frequency	50 / 60 Hz		
Degree of Protection	IP67 / NEMA 6		
Material	<ul style="list-style-type: none"> Enclosure: Aluminum alloy Glass: Tempered glass 		
LED Service Life	60,000 hrs		
Entrance Thread	1 × M25		

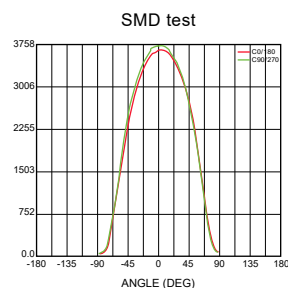


Optical Report

Polar Luminous
Intensity Distribution



Luminous
Intensity Distribution Diagram



Model Code

THT	E	1815	C	C	K	C	J	P0	S25
						①	②	③	④

① C.C.T.

C=Cool White
W=Warm White

② Voltage

H=120~277V
J=200~480V

③ Wattage

L0=120W
P0=150W

④ Mounting Bracket Type

Mounting bracket type
W90=Wall Mount 90°
H90=Hanging Mount 90°
S25/90=Stanchion 25°/90°
P90=Pendant
PA=Pole Adapter Mounting Assembly

Mounting Option & Dimensions (All in mm)

<p>Wall Mount 90° (W90)</p> <p>10.2 kg (22.5 lb)</p>	<p>Pendant (P90)</p> <p>9.7 kg (21.4 lb)</p>	<p>Hanging Mount 90° (H90)</p> <p>10.2 kg (22.5 lb)</p>
<p>Stanchion 25° (S25)</p> <p>10.5 kg (23.1 lb)</p>	<p>Stanchion 90° (S90)</p> <p>10.6 kg (23.4 lb)</p>	<p>Pole Adapter Mount (PA)</p> <p>12.8 kg (28.2 lb)</p>

Applicable Area

- Oil Refinery Complex
- Petrochemical Complex
- Painting Facility
- Transporting Nature Gas
- Transporting Liquefied Petroleum Gas
- Offshore Platform (Oil and Natural Gas)