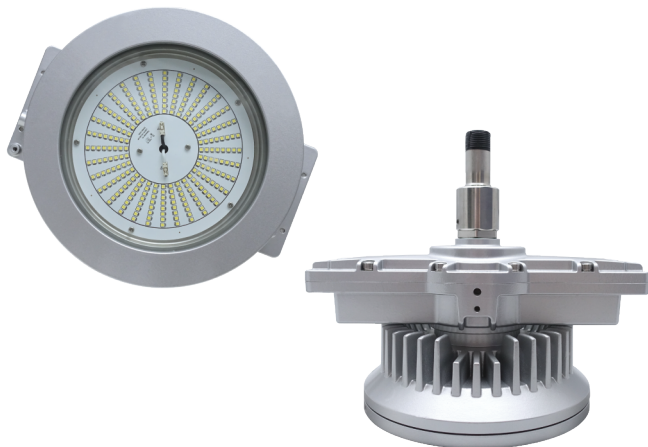


# L1815C

## Luminaires for use in Hazardous Locations



**CID1**  
Group  
B, C, D

**CIID1**  
Group  
E, F, G

**IP67**

**NEMA**  
6

### Protection

- Class I, Division 1  
Groups B, C and D
- Class II, Division 1  
Groups E, F and G
- Class III

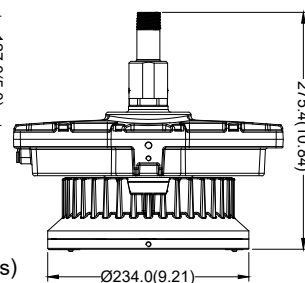
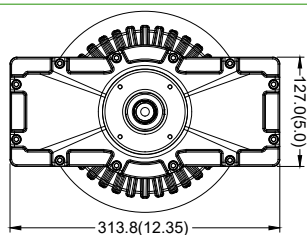
### Standards

UL 844  
UL 1598  
UL 8750  
CSA C22.2 No. 137-18  
CSA C22.2 No. 250.0  
CSA C22.2 No. 250.13

Net Weight: 9.3 kg (20.5 lb)

## Technical Data

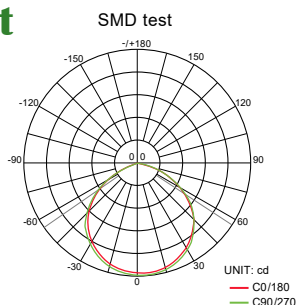
Rated Voltage (±10%)	120V ~ 277V AC / 200V~480V (Full Voltage)		
Watts (±10%)	120W / 150W		
Amps	120W 0.25A ~ 1.00A, 150W 0.31A ~ 1.25A		
Color of LED Light	2700K (Warm White) / 6500K (Cool White)		
Ambient Temperature	CID1: -20°C ~ +40°C, T5 / CIID1: +40°C, T4A		
Power Factor	cos ≥ 0.9		
CRI	Cool White ≥ 70 / Warm White ≥ 78		
Lumen (±10%)	SMD	120W	150W
	2700K	14496lm	17307lm
	6500K	15239lm	18099lm
Beam Angle	X-110° / Y-110°		
Frequency	50 / 60 Hz		
Degree of Protection	IP67 / NEMA 6		
Material	<ul style="list-style-type: none"> <li>• Enclosure: Aluminum alloy</li> <li>• Glass: Tempered glass</li> </ul>		
LED Service Life	60,000 hrs		
Entrance Thread	1 × M25		



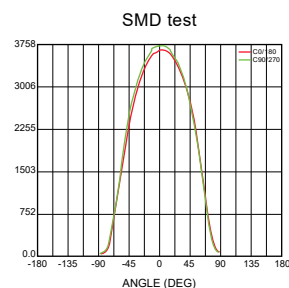
Dimension in Millimeters (inches)

## Optical Report

Polar Luminous  
Intensity Distribution



Luminous  
Intensity Distribution Diagram



## Model Code

<b>THT</b>	<b>E</b>	<b>1815</b>	<b>C</b>	<b>C</b>	<b>K</b>	<b>C</b>	<b>J</b>	<b>P0</b>	<b>WHT</b>
						①	②	③	④

### ① C.C.T.

C=Cool White  
W=Warm White

### ② Voltage

H=120~277V  
J=200~480V

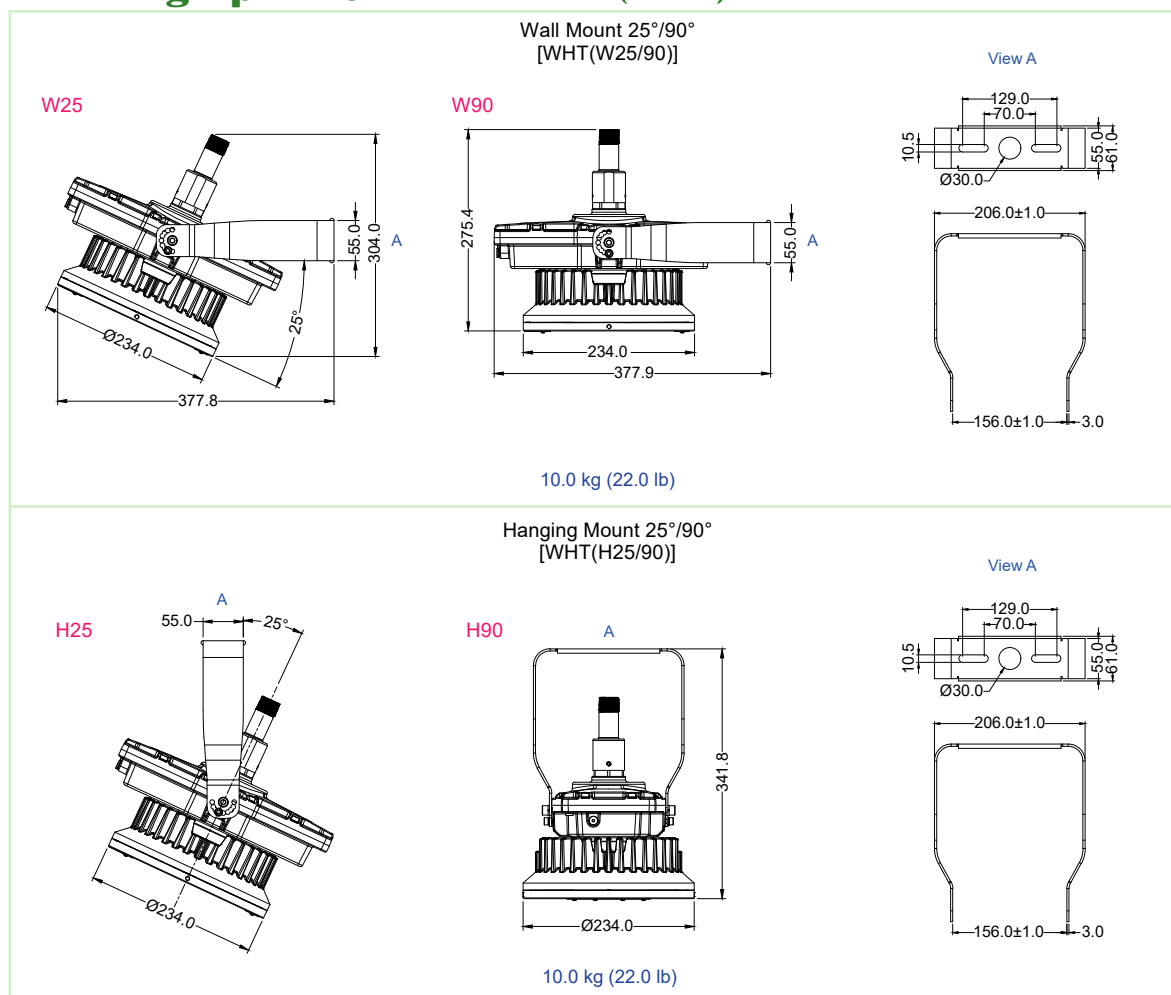
### ③ Wattage

L0=120W  
P0=150W

### ④ Mounting Bracket Type

WHT(W25/90)=Wall Mount 25°/90°  
WHT(H25/90)=Hanging Mount 25°/90°

## Mounting Option & Dimensions (All in mm)



### Applicable Area

- Oil Refinery Complex
- Painting Facility
- Transproting Liquefied
- Offshore Platform
- Petrochemical Complex
- Transporting Nature Gas
- Petroleum Gas
- (Oil and Natural Gas)