



**Zone
1**

**Zone
21**

IP67

**NEMA
6**

Protection

- Ex db IIC T6 Gb
- Ex tb IIIC T85°C Db
- ⓂII 2 G Ex db IIC T6 Gb
- ⓂII 2 D Ex tb IIIC T85°C Db

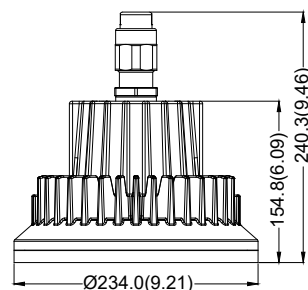
Standards

IEC 60079-0
IEC 60079-1
IEC 60079-31
EN 60079-0
EN 60079-1
EN 60079-31

Net Weight: 6.6 kg (14.6 lb)

Technical Data

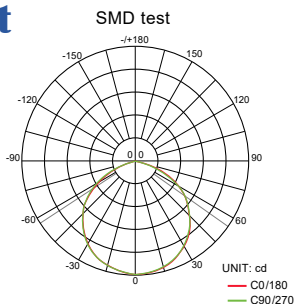
Rated Voltage (±10%)	100V~277V AC / 125V DC
Watts (±10%)	30W / 35W / 40W / 45W / 50W / 55W / 60W
Amps	Vac: 0.11A~0.60A / Vdc: 0.24A~0.48A
Color of LED Light	3000K (Warm White) / 5000K (Cool White)
Ambient Temperature	-20°C ~ +40°C, T6 / -20°C ~ +50°C, T6
Power Factor	cos ≥ 0.9
CRI	Cool White ≥ 70 / Warm White ≥ 80
Lm / W (±10%)	145 lm/w
Beam Angle	X-110° / Y-110°
Frequency	50 / 60 Hz
Degree of Protection	IP67 / NEMA 6
Material	<ul style="list-style-type: none"> • Enclosure: Aluminum alloy • Glass: Tempered glass
LED Service Life	60,000 hrs
Entrance Thread	1 × NPT 3/4"



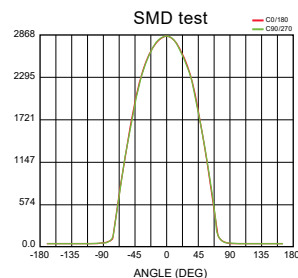
Dimension in Millimeters (inches)

Optical Report

Polar Luminous
Intensity Distribution



Luminous
Intensity Distribution Diagram



Model Code

THT	E	2102	A	B	K	C	H	F0	WHT
			①			②	③	④	⑤

① LED Supply Type

A=AC supply
D=DC supply

② C.C.T.

C=Cool White
W=Warm White

③ Voltage

H=100~277 Vac
L=125 Vdc

④ Wattage

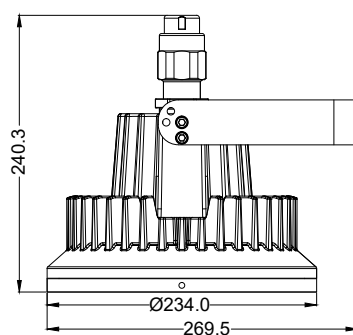
C0= 30W
C5= 35W
D0= 40W
D5= 45W
E0= 50W
E5= 55W
F0= 60W

⑤ Mounting Bracket Type

WHT=Wall/Hanging Mount
S25=Stanchion 25°

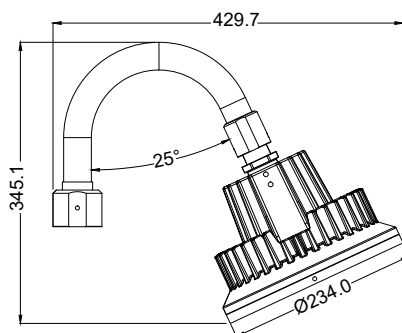
Mounting Option & Dimensions (All in mm)

Wall Mount / Hanging Mount (WHT)



7.6 kg (16.8 lb)

Stanchion 25° (S25)



7.6 kg (16.8 lb)

Applicable Area

- Oil Refinery Complex
- Painting Facility
- Transporting Liquefied
- Offshore Platform
- Petrochemical Complex
- Transporting Nature Gas
- Petroleum Gas
- (Oil and Natural Gas)