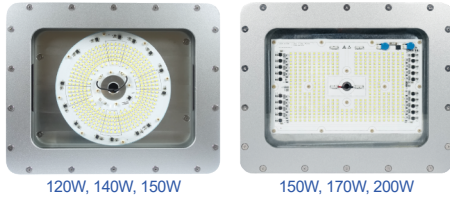
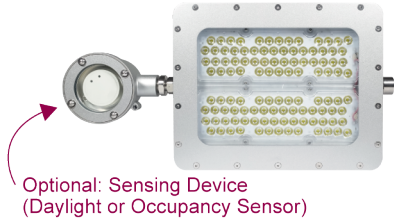


# L1733NS Hazardous Location LED Lighting

## •LED Without Lens (For Single Volt. / AC IN)



## •LED With Lens (For Full Volt. / DC IN)



Zone  
2

Zone  
21

Zone  
22

IP67

NEMA  
6

### Protection

- Ex nR IIC T4 Gc
- Ex tb IIIC T110°C Db
- ⓂII 3 G Ex nR IIC T4 Gc
- ⓂII 2 D Ex tb IIIC T110°C Db

### Standards

IEC 60079-0  
IEC 60079-15  
IEC 60079-31  
EN IEC 60079-0  
EN IEC 60079-15  
EN IEC 60079-31

Net Weight: 13.0 kg (28.7 lb)

\*The full voltage type is equipped with a lens.

Watts	Lens Angle
110~130W	50°, 60°/90°, 120°
100~200W	30°, 60°, 90°, 120°, 149°x(25°+90°)
150W	All Lens

## Technical Data

Rated Voltage (±10%)	110V / 120V / 220V / 230V / 277V AC (Single Volt.) 100~277V AC (Full Volt.*)
Watts (±10%)	120W / 140W / 150W / 170W / 200W (Single Volt.) 100W / 110W / 120W / 130W / 140W / 150W / 160W / 170W / 200W (Full Volt.*)
Amps	0.36A~2.00A
Color of LED Light	3000K (Warm White) / 5000K (Cool White)
Ambient Temperature	-20°C~+50°C, T4 / -20°C~+45°C & -20°C~+40°C, T4 (Only for Full Voltage)
Power Factor	cos≥0.9
CRI	Cool White≥70 / Warm White≥80
Lumen (±10%)	≥ 120 lm
Frequency	50 / 60 Hz
Degree of Protection	IP67 / NEMA 6
Material	• Enclosure: Aluminum alloy • Glass: Tempered glass
LED Service Life	60,000 hrs
Entrance Thread	1 × NPT 3/4"

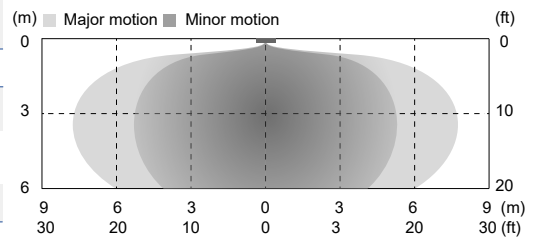
### Daylight Sensor: Digital data control ambient light sensor

Sensing Range	Approx. 2~2,000 lux (0.2~200 fc)
Field of View	Approximate 80°

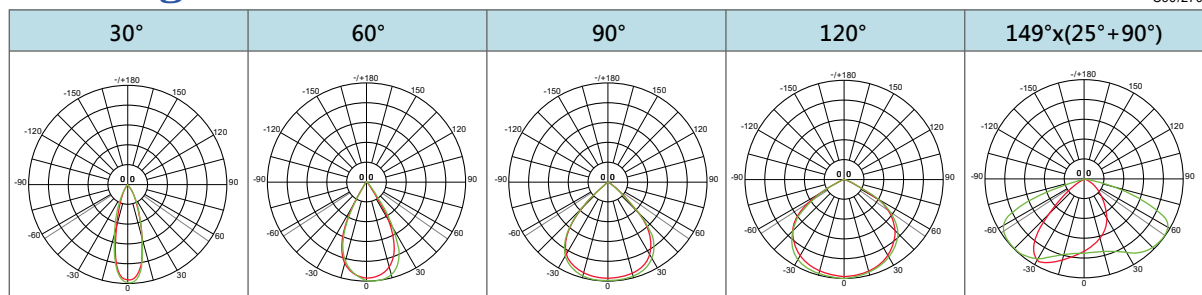
### Occupancy Sensor: Detection Pattern

Mounting Height	3 m (10 ft)	6 m (20 ft)
Coverage*	180 m² (2,000 ft²)	100 m² (1,200 ft²)

\*Sensitivity 100%



## Lens Angle



UNIT: cd  
— C0/180  
— C90/270

## Model Code

THT	H	1733S	S	K	C	H	T0	WHT
			①		②	③	④	⑤

### ① Sensor

S =With Sensor  
Z =Without Sensor

### ② C.C.T.

C=Cool White  
W=Warm White

### ③ Voltage

1=110V, 2=220V,  
6=120V, 9=277V,  
D=230V, H=100~277V

### ④ Wattage

J0=100, K0=110W,  
L0=120W, M0=130W,  
N0=140W, P0=150W,  
Q0=160W, R0=170W,  
U0=200W

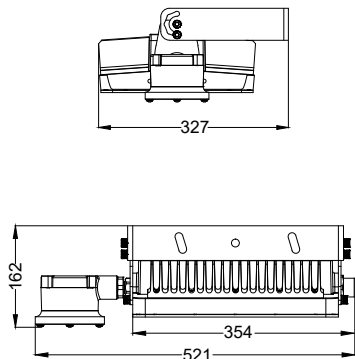
### ⑤ Mounting Bracket Type

WHT(W90)=Wall Mount 90°  
WHT(H90)=Hanging Mount 90°  
RO=Rotatable  
SL=Street Light



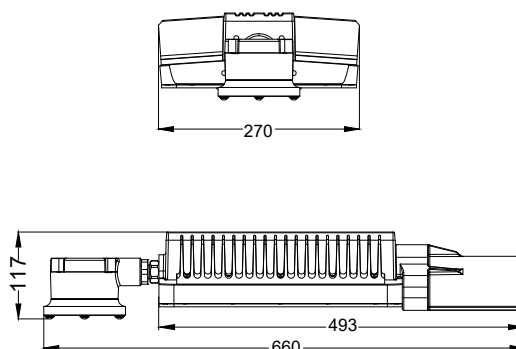
## Mounting Option & Dimensions (All in mm)

Wall Mount 90° [WHT(W90)]



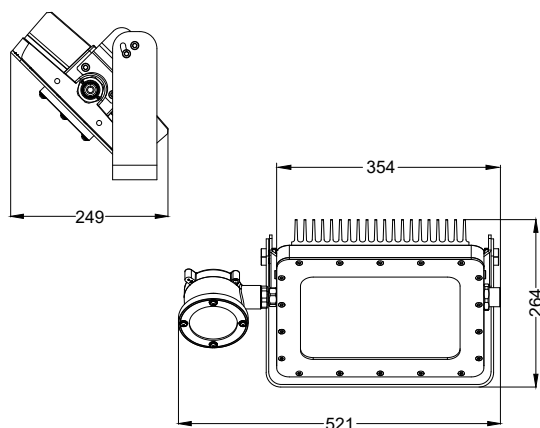
14.2 kg (31.3 lb)

Street Light (SL)



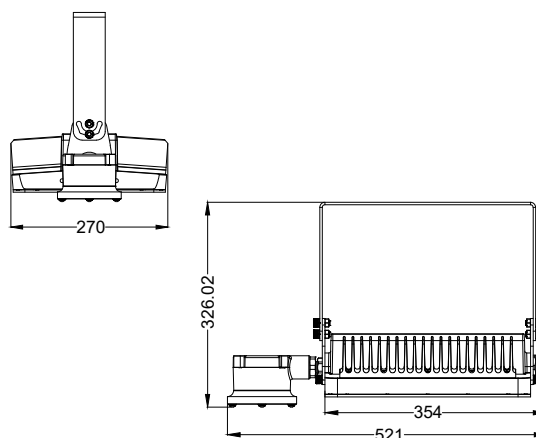
14.1 kg (31.1 lb)

Rotatable (RO)



14.2 kg (31.3 lb)

Hanging Mount 90° [WHT(H90)]



14.2 kg (31.3 lb)