



Luminaires For Use In Hazardous Locations

P1202

Standards:

- UL 844
- UL 1598 Luminaires
- UL 8750
- CSA C22.2 No 137-M1981
- CSA C22.2 No. 250.0-08

Protection:

- Class I, Division 2 Group A, B, C, D
- IP67 / NEMA 6

Ambient Temperature:

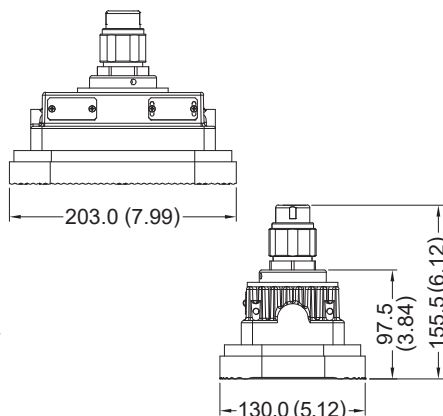
- 40°C ~ +40°C, T4

Applications:

- Power Plants
- Heavy Industrials
- Storage Facility
- Paper Mills
- Wastewater Treatment Plants
- Loading Docks
- Platforms
- Shipyards
- Chemical Processing Facility
- Petrochemical Processing Facility

Dimension:

In mm (inches)



Field Installation:



Petrochemical Factory



Net Weight: 3.7 kg (8.1 lb)

Electrical:

COB	40W
120V	0.33A
277V	0.14A
480V	0.08A

Power Factor	$\cos \geq 0.9$, $\cos \geq 0.87(480V)$
Frequency	50 / 60 Hz

Mechanical:

Enclosure	Aluminum Alloy
Glass	Tempered Glass
Cable Gland	Stainless Steel
Cable	600V, 105°C
Entrance Thread	1 x NPT 3/4"

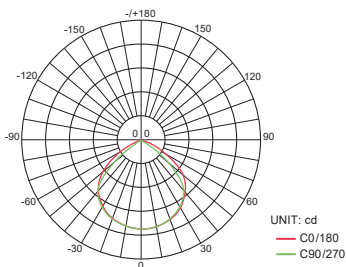
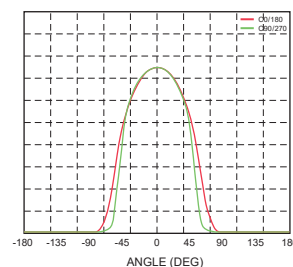
★Frosted Glass is available upon request.

Optical:

Color of LED Light	3000K (Warm White) / 5000K (Cool White)
CRI	Warm White ≥ 80 / Cool White ≥ 70
Beam Angle	X-105° / Y-105°
Lm / W ($\pm 10\%$)	Warm White ≥ 95 / Cool White ≥ 100
Lumen ($\pm 10\%$)	COB 40W
	3000K 3800lm
	5000K 4000lm

Optical Report:

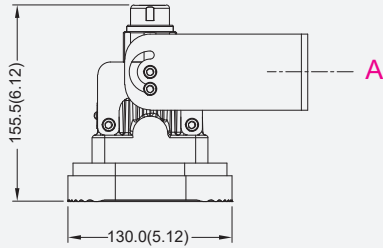
COB test

Polar Luminous
Intensity DistributionLuminous
Intensity Distribution Diagram

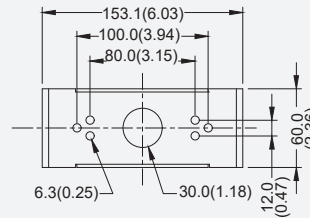
Mounting Option & Dimension : In mm (inches)

Wall Mount 4.6 kg (10.1 lb)

90° (W90)

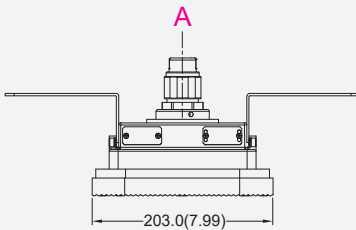


View A

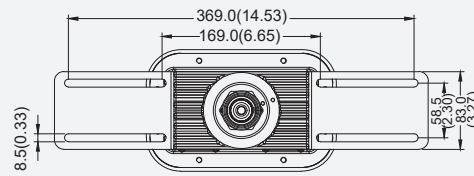


Ceiling Mount 4.1 kg (9.0 lb)

(C90)

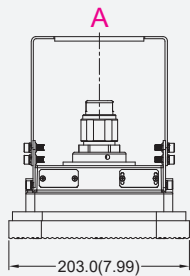


View A

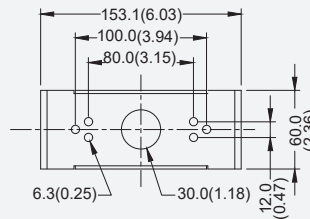


Pendant Mount 4.6 kg (10.1 lb)

90° (H90)

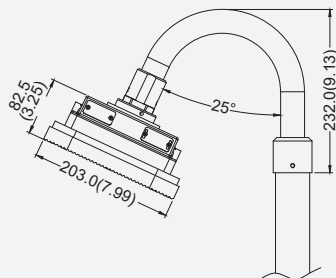


View A

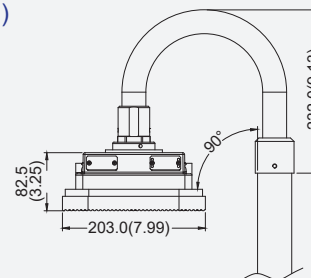


Bending Electrical Tube S25: 4.9kg (10.8 lb) / S90: 5.00 kg (11.0 lb)

25° (S25)

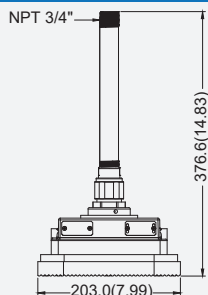


90° (S90)

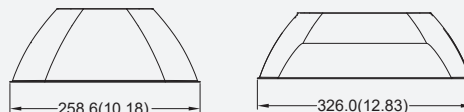


Straight Electrical Tube 4.3 kg (9.4 lb)

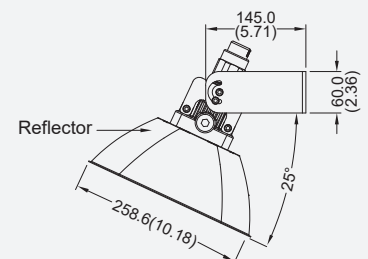
(P90)



Optional Accessory : In mm (inches)



Reflector (R)



Model Code:

THT	H	1202	Z	C	B	C	9	D0	C90	R
				①		②	③		④	⑤

① Top Cover

C=Top cover with NPT 3/4" opening
D=Top cover without opening

② C.C.T.

C=Cool White
W=Warm White

③ Voltage

6=120V, 9=277V, C=480V

④ Mounting Bracket Type

C90=Ceiling Mounting 90°
W90=Wall Mounting 90°
H90=Pendant Mounting 90°
S25=Bending Electrical Tube 25°
S90=Bending Electrical Tube 90°
P90=Straight Electrical Tube

⑤ Optional Accessory

R=Reflector
(Keep the code blank if no accessory is needed.)