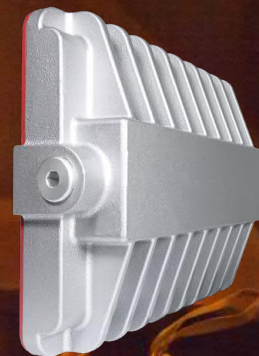
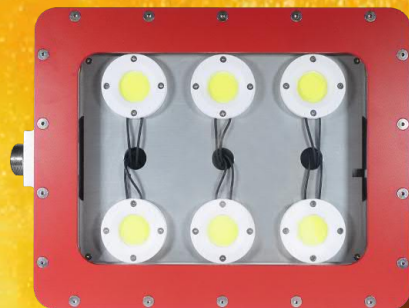


L1733N

120W



Net Weight: 8.2 kg (18.0 lb)



Over 1000 hours  
of operation at  
100 °C ambient  
temperature



# High Humidity & Heat Resistant LED Light

- ★ AC LED Driver-less Technology
- ★ Intended for Use in High Ambient Temperature Environments

## High Ambient Temperature:

+65°C ~ +100°C (+149°F ~ +212°F)



## Applications:

- Pulp & Paper (Cooking and Drying Area)
- Glass Factory (Processing Area)
- Metal Forging or Metal Recycling Plant (Heating or Forging Area)
- Oil & Gas (Furnace Towers or Compressor Rooms)
- Garbage Processing Plant (Burning Area)
- Coal Power Plant (Burning Area)
- Gas Turbine Power Plant (Gas Turbine Area)
- Painting Factory (Drying Area)
- Winery (Distillation Chamber)
- Textile (Dyeing and Finishing Area)
- Food Process (Heating, Cooking or Baking Area)

## Standards:

UL 844  
UL 1598  
UL 8750  
CSA C22.2 No.250.0

## Protection:

IP67

### Electrical:

Rated Voltage (±10%)	120V / 220V AC	
Watts (±10%)	120W	
Amps	120V: 1.0A / 220V: 0.55A	Amp = Watt. / Volt.
Power Factor	$\cos \geq 0.9$	
Frequency	50 / 60 Hz	
LED Service Life	60,000 hrs*	*L70 at 55°C Ambient Temperature
Warranty	1 year warranty without warranting lumen depreciation.	

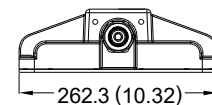
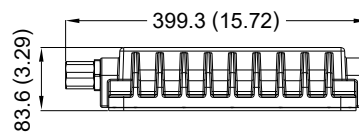
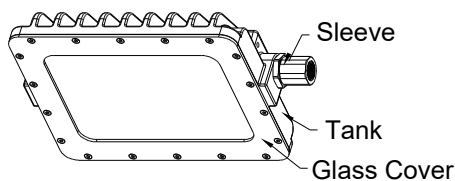
### Mechanical:

Enclosure	Aluminum Alloy
Glass	Tempered Glass
Cable Gland	Stainless Steel
Entrance Thread	1 x NPT 3/4"

### Optical:

Color of LED Light	5000K (Cool White)
CRI	$\geq 70$
Beam Angle	X-110° / Y-110°
Lm / W (±10%)	138 lm/w
Lumen (±10%)	16560 lm

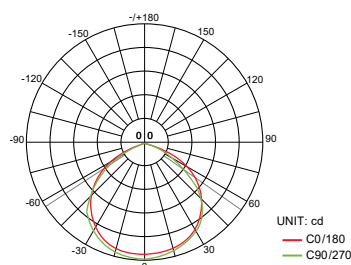
### Dimension: In mm (inches)



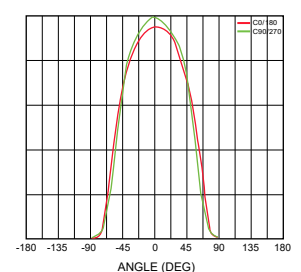
### Optical Report:

COB test

Polar Luminous  
Intensity Distribution



Luminous  
Intensity Distribution Diagram



### Mounting Option & Dimension : In mm (inches)

<p>Wall Mount 25° [WHT (W25)]</p> <p>9.8 kg (21.6 lb)</p>	<p>Wall Mount 90° [WHT (W90)]</p> <p>9.8 kg (21.6 lb)</p>	<p>Hanging Mount 20° [WHT (H20)]</p> <p>9.8 kg (21.6 lb)</p>	<p>Hanging Mount 90° [WHT (H90)]</p> <p>9.8 kg (21.6 lb)</p>
<p>Street Type (SL1)</p> <p>9.3 kg (20.5 lb)</p>		<p>Electrical Tube Mount (SL2)</p> <p>9.3 kg (20.5 lb)</p>	