



TOP HI-TECH CO., LTD.

Model - L2303

Waterproof LED Light



Made In
Taiwan

Specification Sheet

Design 2023 / 11



+886-2-2267-1234

sales@tht-ex.com

www.tht-ex.com

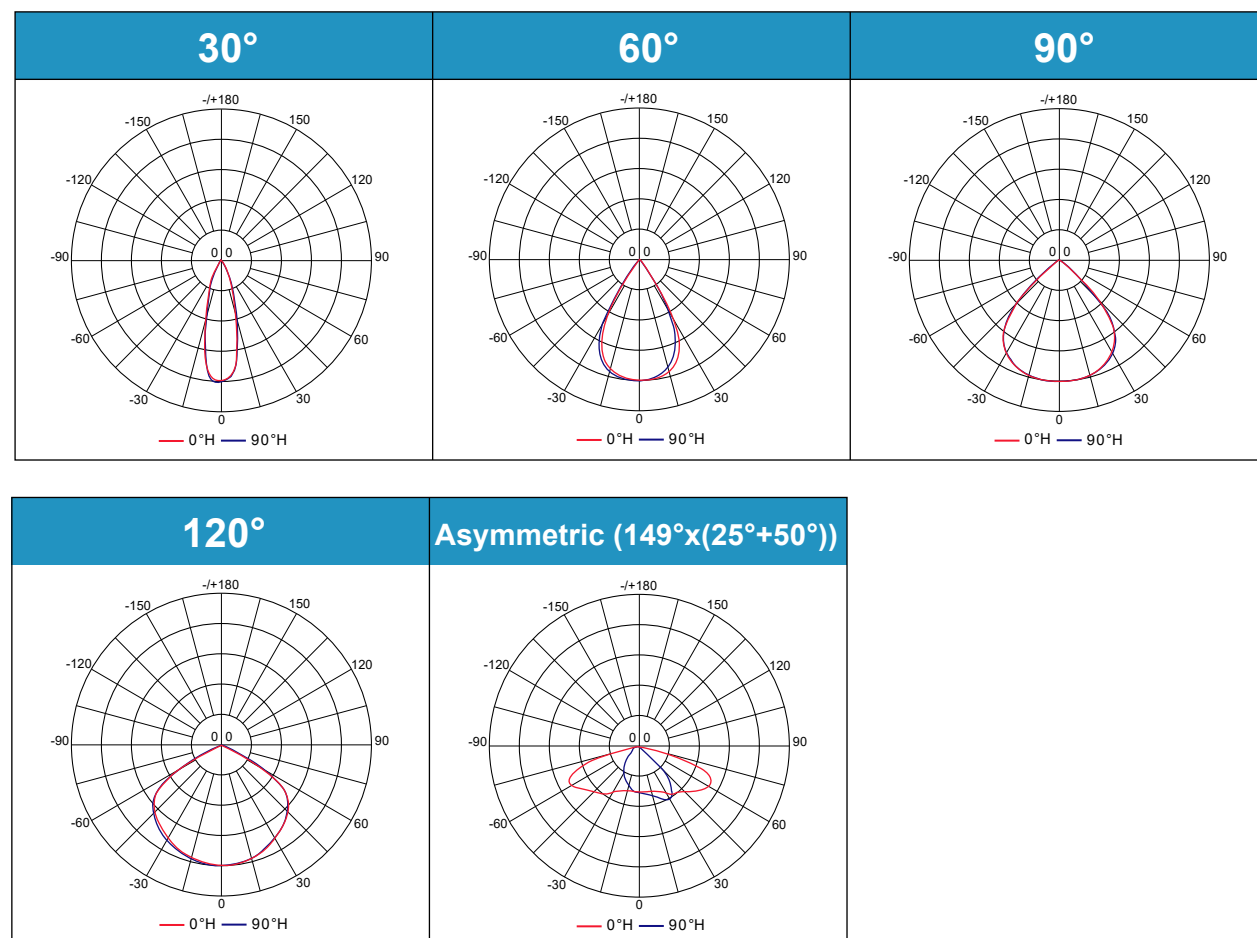
Product Features

- Unique design lighting fixture with private mold, Made in TAIWAN.
- Patented independent driver design, allows a single light source module or power module failure, will not affect the other modules, to prevent area without lighting and cause danger.
- Aluminum alloy housing with corrosion resistant hardware, super durable powder coating finish withstand extreme climate changes without cracking or pearling. Product passed 1200 hrs. salt mist test.
- Advanced lamp mechanism for easy adjust lighting direction and replaceable optic lens.
- Up to 7 beam angles of IK10 Anti-UV optical lens and 3 type of mounting bracket available for various lighting application.
- Lighting fixture available in 100~277Vac, 50/60Hz, IP68 water and dust resistance.
- Optional 0~10V or PWM Dimming.
- Wind tunnel safety testing approved- up to 60m/s (216 km/h; 135 mph) wind resistance.
- Certification for Lighting Fixture: CE/FCC.
- Certification for LED Driver: CE/CB/PSE/FCC/UL.
- EU energy efficiency class A+.
- L70 greater than 54,000 hrs. @50°C.

Specifications

Color Temp.	Warm White (3000K) / Cool White (5000K)
Wattage ($\pm 10\%$)	100W, 110W, 120W, 130W, 140W, 150W 160W, 170W, 180W, 190W, 200W
Lum. / Wat. ($\pm 10\%$)	Warm White: 156~143 lm/w Cool White: 162~150 lm/w
Input Voltage	100-277Vac
Net Weight	4.1 kgs / 9.0 lbs
CRI	$\geq 70\text{Ra}$
Lens	30°, 60°, 90°, 120°, Asymmetric (149°x(25°+50°))
Dimming Options	0-10V dimming
SPD	Optional 12kV / 6kV surge protection
IP Rating	IP67
Operating Temp.	-20°C ~ +55°C
Lifespan	L70 greater than 54,000 hrs. @50°C
Warranty	3-year warranty

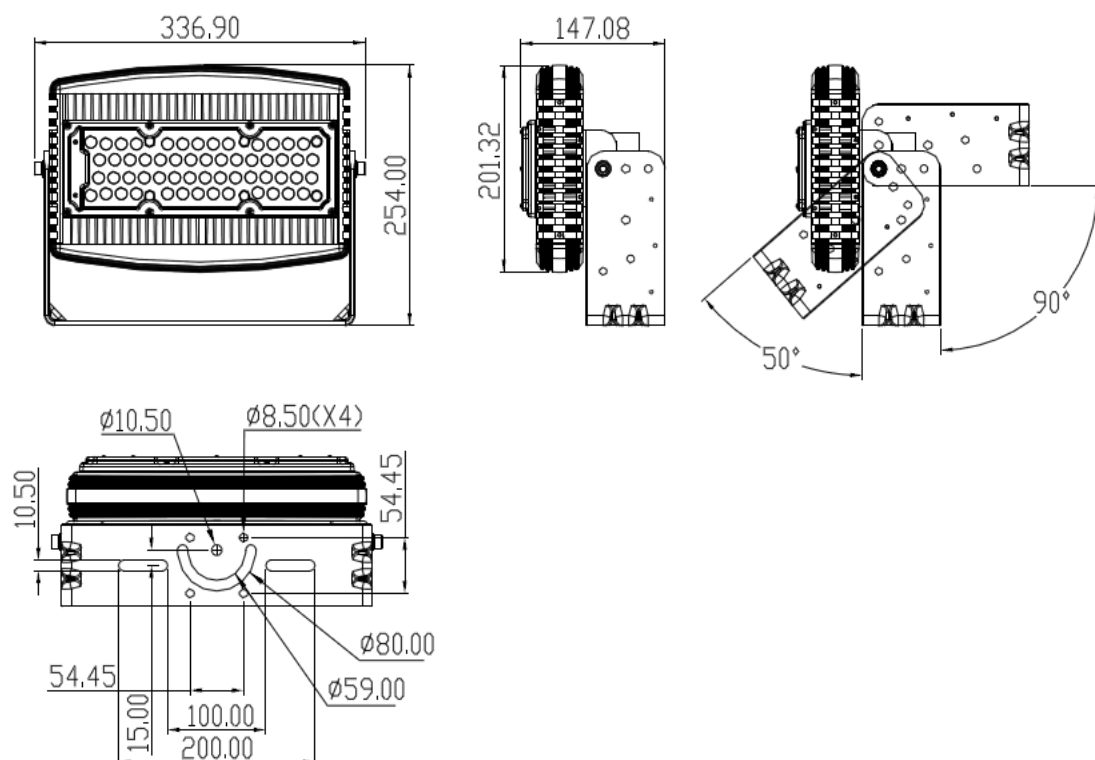
Light Pattern



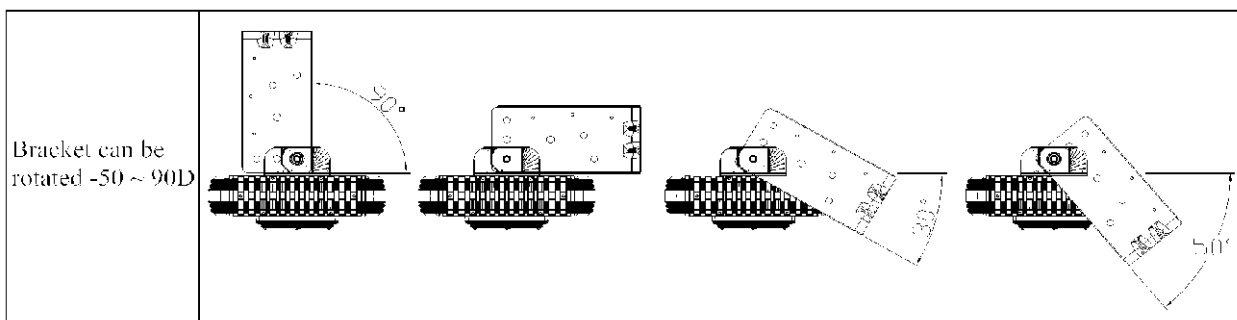
Dimension Drawing (All in mm)

Flood / Bay Light

Product Dimension 254mm(L) X 337mm(W) X 147mm(D)
Product Weight 4.1kg



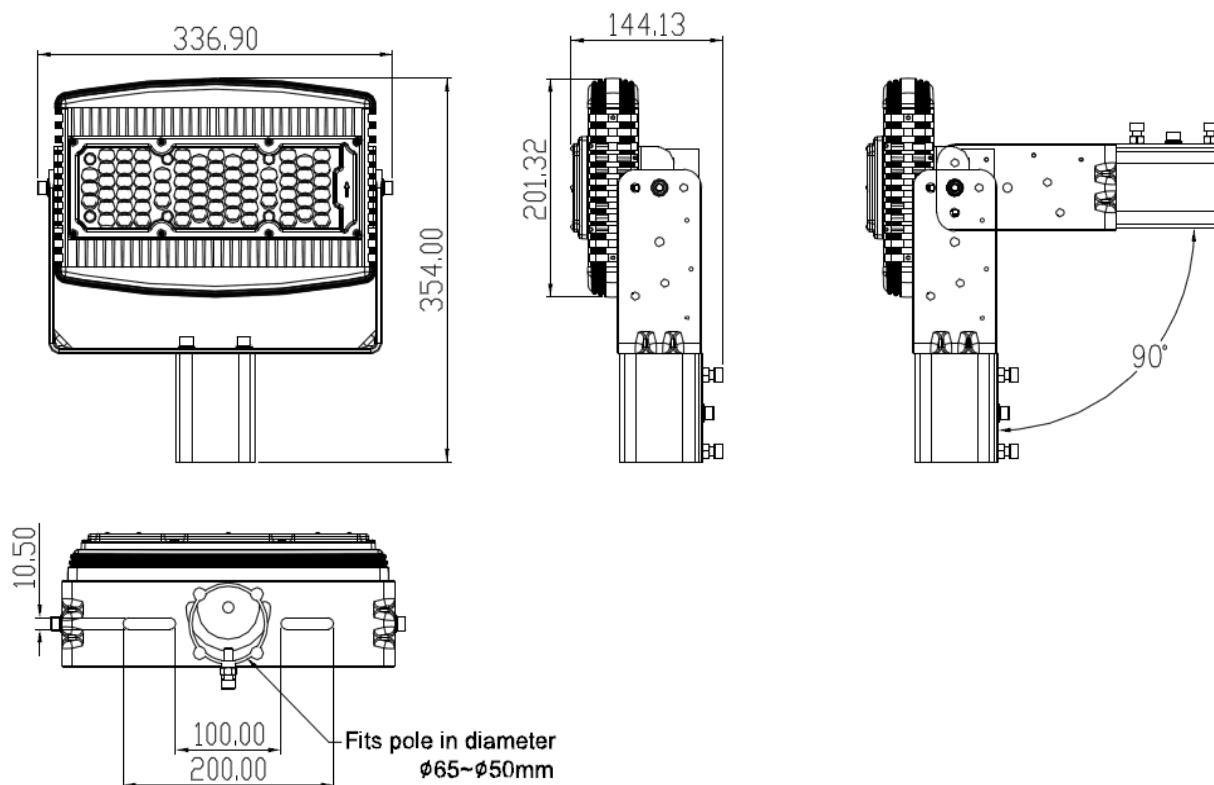
Flood Light Bracket can Rotate Angle - 50 ~ 90 Degree



Dimension Drawing (All in mm)

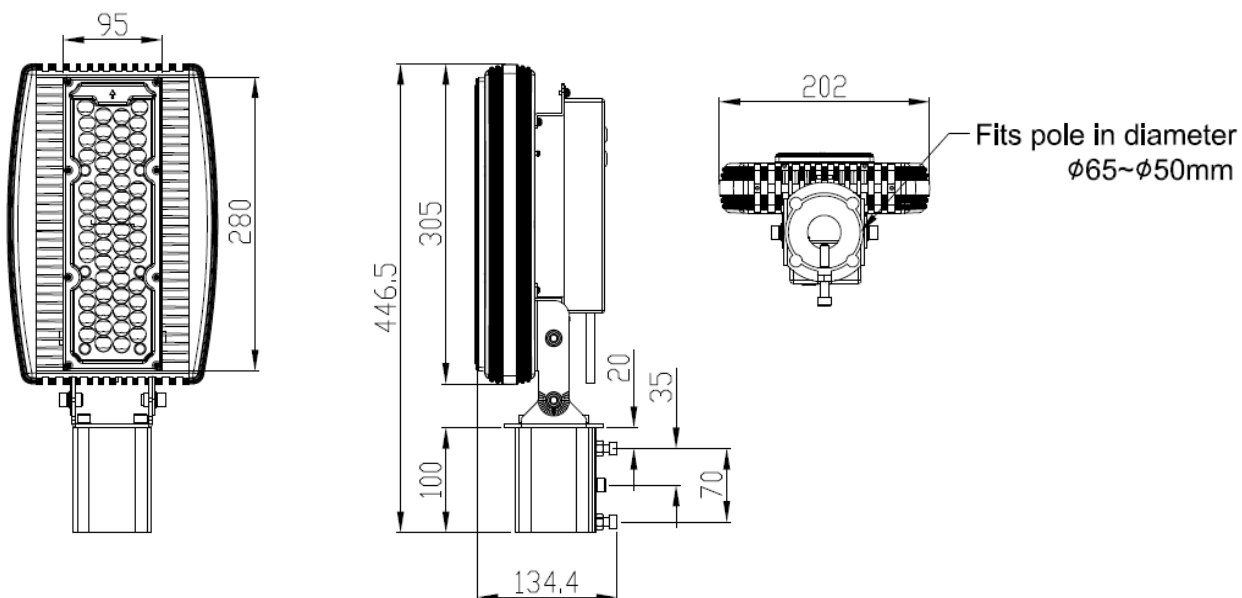
Pole Light Mount

Product Dimension 354mm(L) X 337mm(W) X 144mm(D)
Product Weight 4.1kg



Street Light Mount

Product Dimension 447mm(L) X 202mm(W) X 135mm(D)
Product Weight 4.1kg



Ordering Information

THT W 2303 A K C H U0 01 WHT
① ② ③ ④

① Designates type of Lens type

A=Elementary, B=Advanced

② C.C.T.

C=Cool White
W=Warm White
G=Green Light

③ Wattage

J0=100W, K0=110W, L0=120W
M0=130W, N0=140W, P0=150W
Q0=160W, R0=170W, S0=180W
T0=190W, U0=200W

④ Mounting Bracket Type

WHT=Flood/Bay Light Mount
P=Pole Light Mount
S=Street Light Mount

Dimming Signal (Option):

- Dimming signal could be PWM or Vdc signal.
- 1~10V dimming function for output current adjustment (Typical)

1~10V dimming function for output current adjustment (Typical)

Dimming value	1V	2V	3V	4V	5V	6V	7V	8V	9V	10V	OPEN
Percentage of rated current	10%	20%	30%	40%	50%	60%	70%	80%	90%	100%	95%~108%

10V PWM signal for output current adjustment (Typical): Frequency range : 100Hz~3KHz

Dimming value	10%	20%	30%	40%	50%	60%	70%	80%	90%	100%	OPEN
Percentage of rated current	10%	20%	30%	40%	50%	60%	70%	80%	90%	100%	95%~108%

Dimming cable pin assignment

Color	Function
White	DIM-
Blue	DIM+

Application

- Stadium Lighting
- Sports Field Lighting
- High Mast Lighting
- Billboard Lighting
- Area Lighting
- Parking Lot Lighting