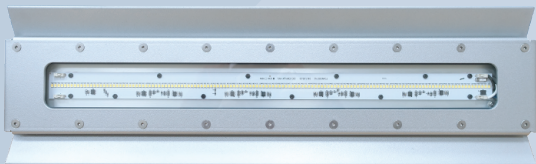
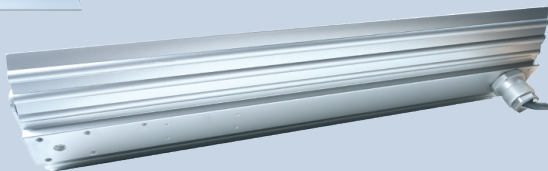


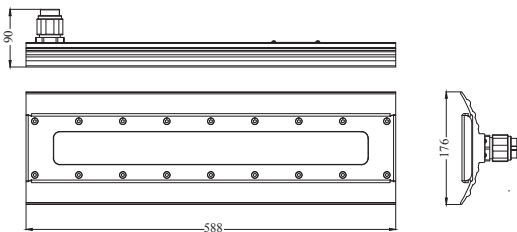
L1319C



2ft. Net Weight : 5.3 kg



Certifications :



Dimension in Millimeters

Applicable Location

- Class I, Division 2, Group A, B, C and D
- Class II, Division 2, Group F and G

Environmental Rating

- NEMA 6/6P
- IP 67/68

Electrical Ratings

Voltage	120Vac / 277Vac
Frequency	50Hz / 60Hz
Wattage	40W / 60W
Operating Temperature	-40°C ~ +55°C
Power Factor	> 0.9

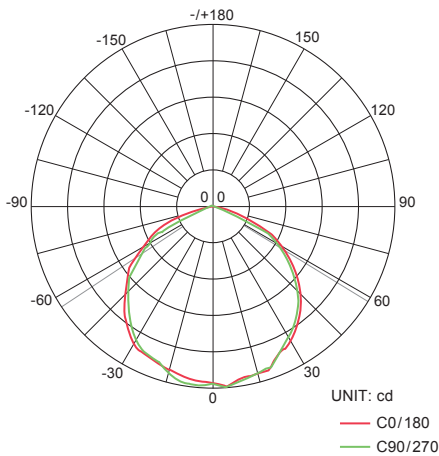
Raw Materials

Housing	Aluminum Alloy
Screws	Stainless Steel
Tempered Glass	IEC Standards impact-resistant > 4 Joule

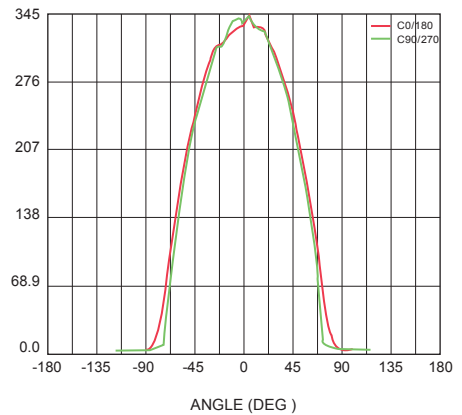
In accordance with special application requirement, THT-EX is able to offer higher specifications on Explosion-proof LED lighting devices, includes

- Lighting can be started at low temperature -65°C
- IP rating IP68
- Salt water spray test 72 hours \sim 1000 hours

Polar Luminous Intensity Distribution



Luminous Intensity Distribution Diagram



Optical Information

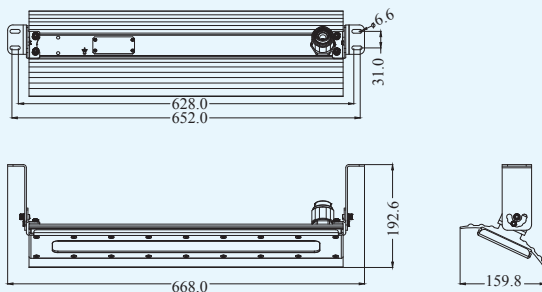
CCT	3000K \pm 10% (Warm White) 5000K \pm 10% (Cool White)
CRI	> 80 (Warm White) > 70 (Cool White)
Lum/Watt.	\geq 90 (Warm White) \geq 100 (Cool White)
Beam Angle	\geq 110° (Warm White) \geq 110° (Cool White)
IES Files	Available upon request



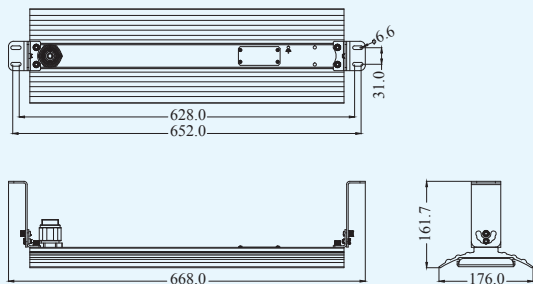
● L1319C(2ft.)-Standard Product

Dimensions and Mounting (Mounting Code)

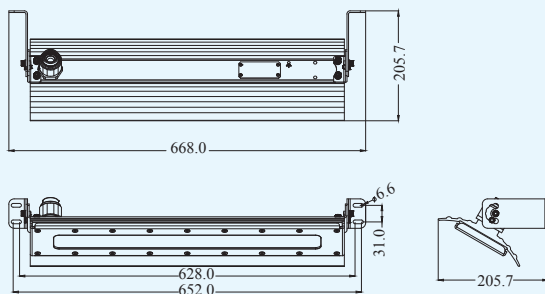
Hanging Mount 25° (H25)



Hanging Mount 90° (H90)



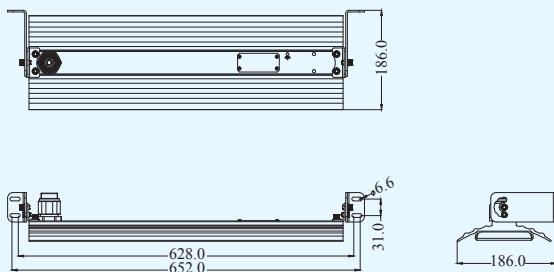
Wall Mount 25° (W25)



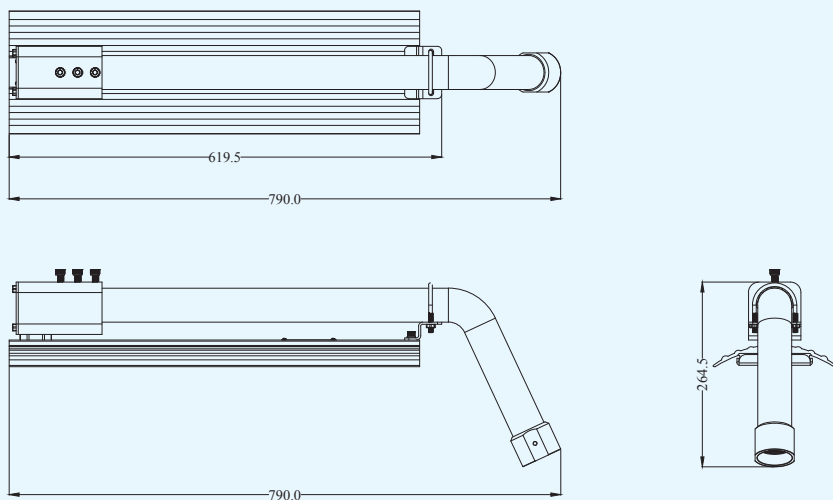
● L1319C(2ft.)-Standard Product

Dimensions and Mounting (Mounting Code)

Wall Mount 90° (W90)



Street Light (SL)



Part Number

• W.W.: 3000K±10% • C.W.: 5000K±10%

Model No.	Size	Watt.	Volt.	Color	Part Number
L1319C	2ft.	40W 60W	120V 277V	W.W	THTH1319CNHW*▲
				C.W	THTH1319CNHC*▲

*—6:120V 9:277V

▲—D0:40W F0:60W

Ordering information: Part number + mounting code