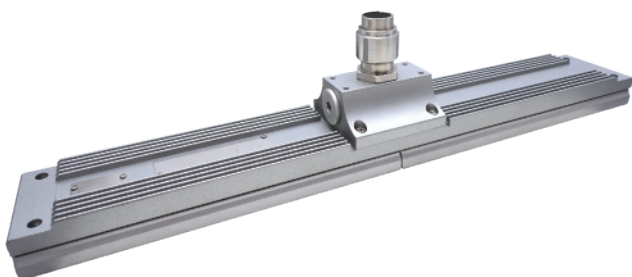


L1319

High Humidity &
Heat Resistant LED Lighting



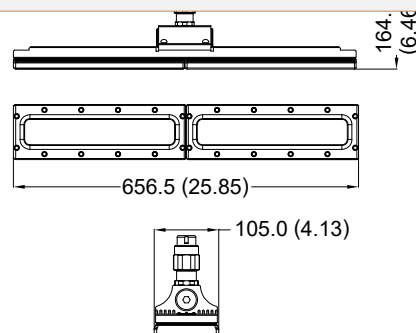
Standards

UL 844
UL 1598
UL 8750
IEC 60079
EN 60079
CNS 3376
CSA C22.2 No.250.0

Net Weight: 7.4 kg (16.3 lb)

Technical Data

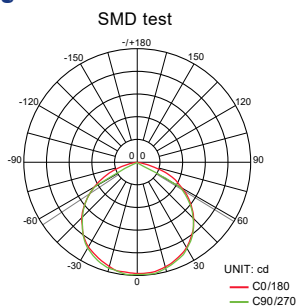
Rated Voltage (±10%)	110V / 120V / 220V / 277V AC		
Watts (±10%)	40W / 60W(Only 110V, 120V, 220V)		
Amps	40W 110V: 0.36A, 120V: 0.33A, 220V: 0.18A, 277V: 0.14A 60W 110V: 0.55A, 120V: 0.50A, 220V: 0.27A		
Color of LED Light	3000K (Warm White) / 5000K (Cool White)		
Ambient Temperature	+66°C ~ +85°C		
Power Factor	cos ≥ 0.9		
CRI	Cool White ≥ 70 / Warm White ≥ 80		
Lumen (±10%)	SMD	40W	60W
	3000K	3600lm	5400lm
	5000K	4000lm	6000lm
Beam Angle	X-116° / Y-113°		
Frequency	50 / 60 Hz		
Degree of Protection	IP67/ NEMA 6		
Material	<ul style="list-style-type: none"> Enclosure: Aluminum alloy Glass: Tempered glass 		
LED Service Life	60,000 hrs*		
Entrance Thread	3 × M25		



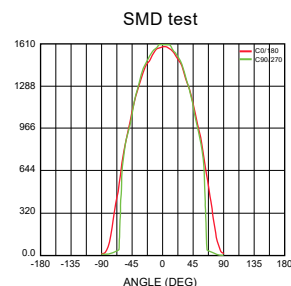
Dimension in Millimeters (inches)

Optical Report

Polar Luminous
Intensity Distribution



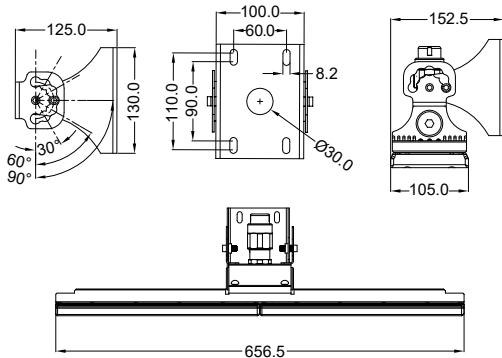
Luminous
Intensity Distribution Diagram



*L70 at 55°C Ambient Temperature *2 years warranty without warranting lumen depreciation.

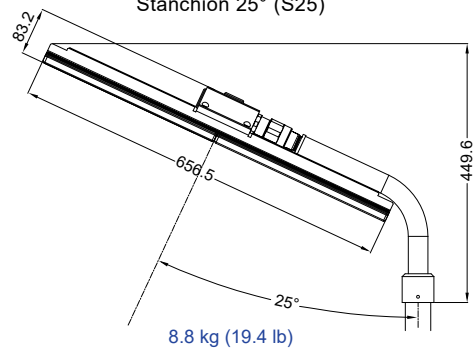
Mounting Option & Dimensions (All in mm)

Wall Mount 90° (W90)



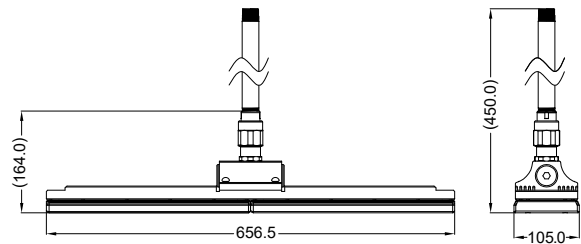
7.9 kg (17.4 lb)

Stanchion 25° (S25)



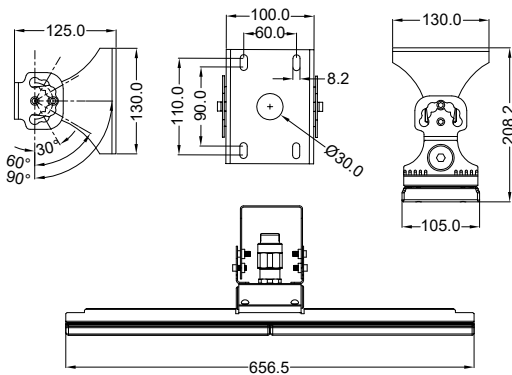
8.8 kg (19.4 lb)

Pendant Mount (P90)



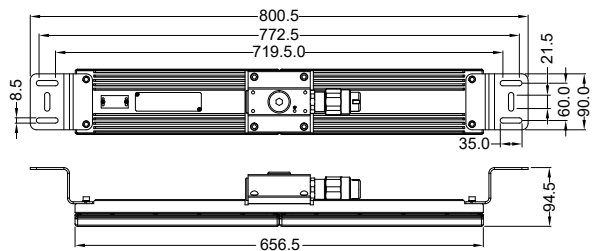
7.8 kg (17.2 lb)

Hanging Mount 90° (H90)



7.9 kg (17.4 lb)

Ceiling (C90)



7.7 kg (17.0 lb)

Applicable Area

- Pulp & Paper Industry
- Smelter
- Automotive Industry
- Cable Manufacturing
- Power Plants
- Casthouse
- Textile Industry
- Glass Factory



LED Lighting Solutions
for High Temperature Areas