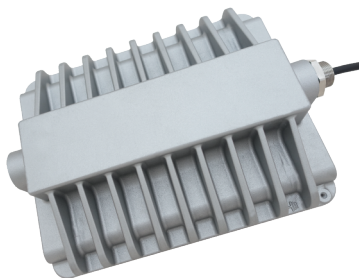
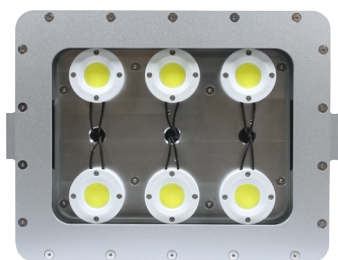


# L1733N

High Humidity &  
Heat Resistant LED Lighting



## Standards

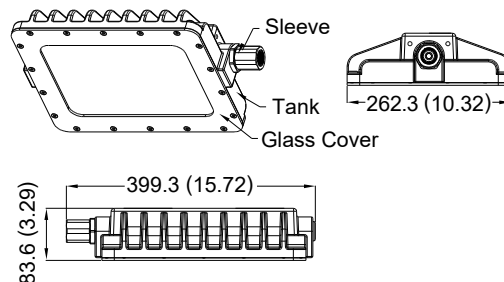
UL 844  
UL 1598  
UL 8750  
CSA C22.2 No.250.0

Net Weight: 8.2 kg (18 lb)

COB

## Technical Data

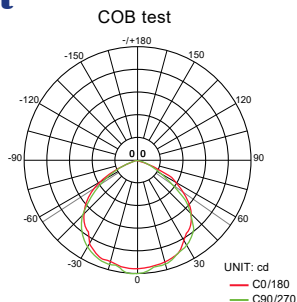
Rated Voltage (±10%)	120V / 277V AC	
Watts (±10%)	120W	
Amps	120V: 1.00A, 277V: 0.43A	
Color of LED Light	3000K (Warm White) / 5000K (Cool White)	
Ambient Temperature	+66°C ~ +85°C	
Power Factor	cos ≥ 0.9, cos ≥ 0.87(480V)	
CRI	Cool White ≥ 70 / Warm White ≥ 80	
Lumen (±10%)	COB	120W
	3000K	12192lm
	5000K	14416lm
Beam Angle	X-110° / Y-110°	
Frequency	50 / 60 Hz	
Degree of Protection	IP67/ NEMA 6	
Material	•Enclosure Aluminum alloy •Glass Tempered glass	
LED Service Life	60,000 hrs*	
Entrance Thread	1 × NPT 3/4"	



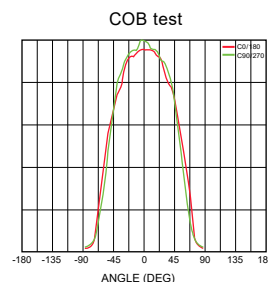
Dimension in Millimeters (inches)

## Optical Report

Polar Luminous  
Intensity Distribution

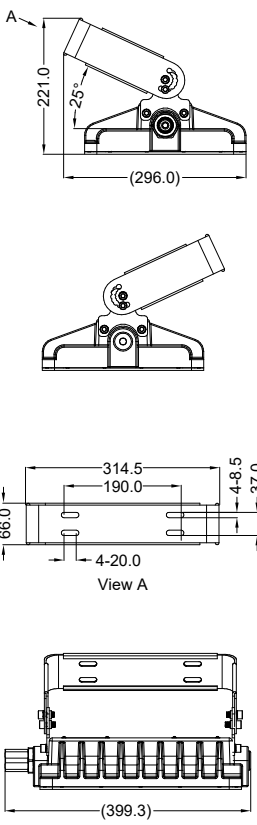
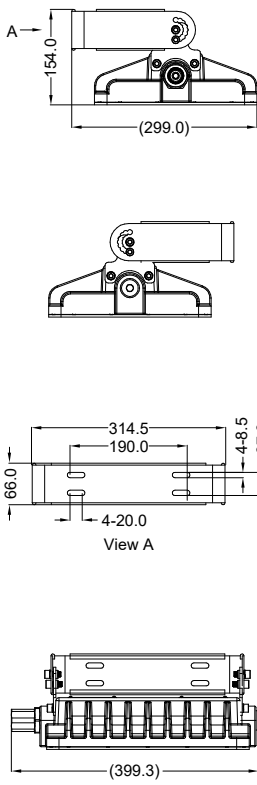
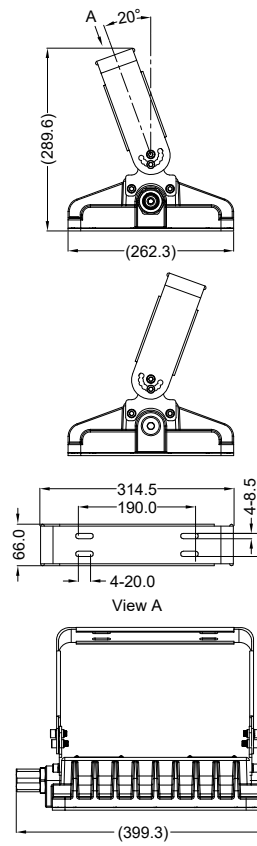
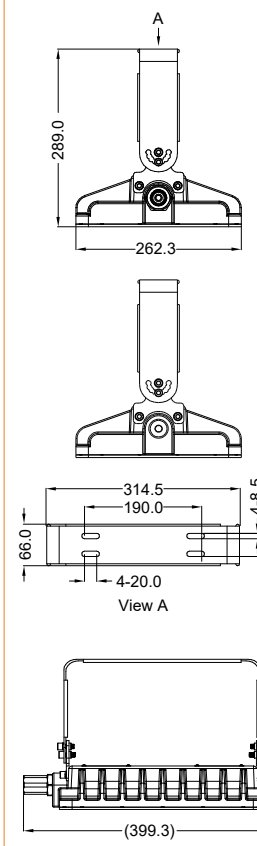


Luminous  
Intensity Distribution Diagram



\*L70 at 55°C Ambient Temperature \*2 years warranty without warranting lumen depreciation.

## Mounting Option & Dimensions (All in mm)

Wall Mount 25° [WHT (W25)]	Wall Mount 90° [WHT (W90)]	Hanging Mount 20° [WHT (H20)]	Hanging Mount 90° [WHT (H90)]
			
9.8 kg (21.6 lb)	9.8 kg (21.6 lb)	9.8 kg (21.6 lb)	9.8 kg (21.6 lb)

### Applicable Area

- Pulp & Paper Industry
- Power Plants
- Smelter
- Casthouse
- Automotive Industry
- Textile Industry
- Cable Manufacturing
- Glass Factory

THT-EX

Pulp & Paper  
Glass Factory  
Steel Mill  
Power Plant  
Recycling Plant



or even recycling plants, where furnaces, dryers and heaters operate at ambient temperature that is over 70°C(159°F).



LED Lighting Solutions  
for High Temperature Areas