

Operating Instructions

Universal Flame Proof IP Camera

Model C1203



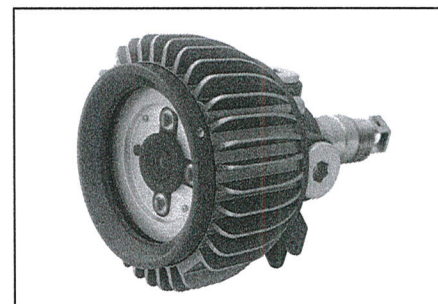
Drawing No: Instructions C1203 IECEEx

Revision Level: 01

Date: 2018-12-10

Top Hi-Tech Co., Ltd.
9F 1 Zhongshan Rd Tucheng
Districs New Taipei, 236 Taiwan
Website: www.tht-ex.com

TEL: +886 2 22671234
FAX: +886 2 22691166
e-mail: sales@tht-ex.com
Revision: EX-C1203-01



Contents

1. General Safety Instructions	1
2. Intended Field of Application.....	1
3. Technical Data	2
4. Dimension	3
5. Assembly and Installation	3
6. IP Cameras Setting	5
7. Maintenance	8
8. Accessories and Spare Parts	9
9. Transport, Storage and Disposal	9

1. General Safety Instructions

⚠ WARNING

This manual contains basic safety instructions to be observed during installation, operation and maintenance of the apparatus, and for properly and safety run of the apparatus according to its performance data. Any damage of the apparatus may result explosion protection null and void. This manual represents the most relevant information about the product, applicable codes and regulations shall supplement it. Non-observance will endanger persons, plant and the environment. The person in charge is required to secure its employment in the industrial unit. Any improper usage, as well as non-compliance with the rules under this manual, shall release the manufacturer's all responsibilities.

The flameproof joints are not intended to be disassembled or repaired.

WARNING – The equipment shall not be opened

1.1 Before assembly/commissioning:

- ☞ Read through the operating instructions.
- ☞ Give adequate training to the assembly and operating personnel.
- ☞ Ensure that the contents of the operating instructions are fully understood by the personnel in charge.
- ☞ The national installation and assembly regulations (e.g. IEC/EN 60079-14) apply.

1.2 When operating the device:

- ☞ Ensure the operating instructions are made available for the person in charge on location at all times.
- ☞ Observe these instructions, other working instructions and national safety regulations.
- ☞ Verify the implementation of safety instructions.

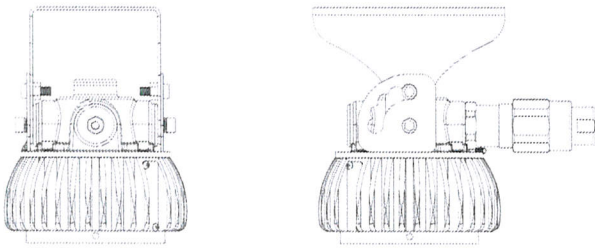
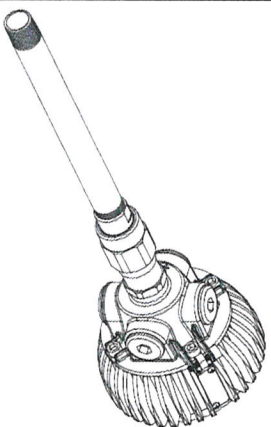
2. Intended Field of Application

The Universal Flame Proof IP Camera, Model C1203 is intended for using in gas explosive atmospheres (Zone 1 & Zone 2 according to IEC60079-10-1) and dust explosion hazards (Zone 21 and Zone 22 according to IEC60079-10-2). The use in other potentially explosive atmospheres does not correspond to the designated use and is therefore not allowed.

The apparatus is designed for using in indoor and outdoor environments.

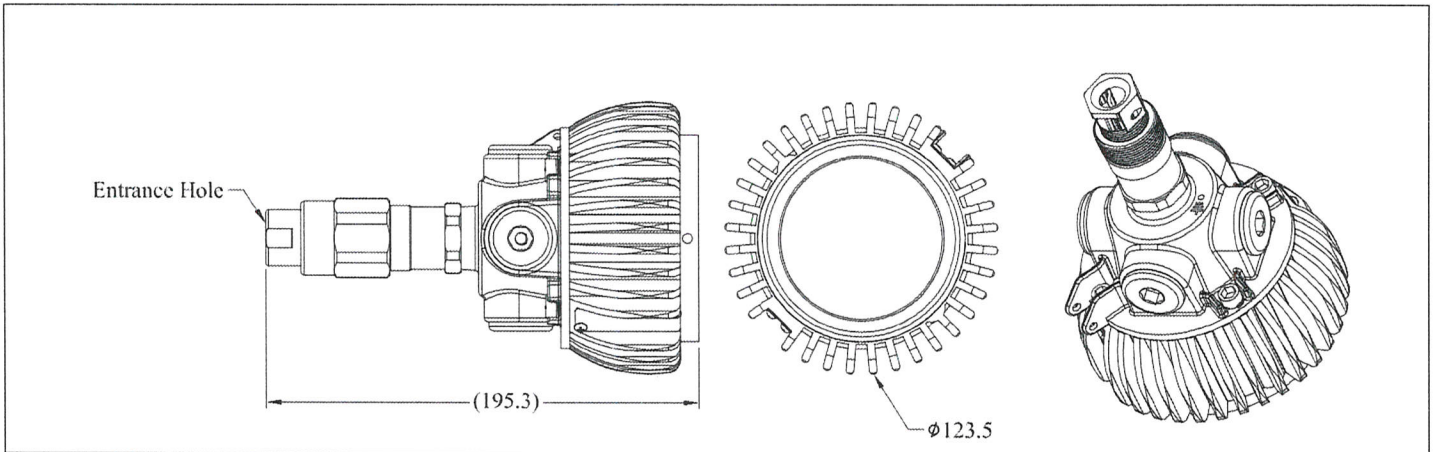


3. Technical Data

Item	Description	
Explosion Protection	IECEX UL 18.0069X	
IECEX	Ex db IIB+H ₂ T6 Gb	
Gas Explosion Protection	Ex tb IIIC T85°C Db	
Dust Explosion Protection	DEMKO 18 ATEX 2055X	
ATEX	ⒺII 2 G Ex db IIB+H ₂ T6 Gb	
Gas Explosion Protection	ⒺII 2 D Ex tb IIIC T85°C Db	
Dust Explosion Protection		
Rated Voltage	48 Vdc (±10%)- POE Switch;	
Wattage	5.6W	
Ambient Temperate Range	-20°C ~ +40°C	
Degree of Protection	IP67	
Material	Enclosure: Aluminum alloy Glass: Tempered glass	
IP Camera Service Life	1 year	
Entrance Hole	NPT1/2" threaded hole	
Cable Gland	⌀ 20.9 Parallel screws×1.814 mm, Secure to Top Cover with torque value 550 kgf-cm.	
Fitting Cable	Size of Sealing Ring	Fitting Cable
	ID: Ø6.0, L=25.6 mm	OD: Ø6.0
Mounting Type / Weight	WHT Mounting	
		
	2.8kg	
	Straight pendant electrical tube mounting	
		
	2.8Kg	



4. Dimensions (All Dimensions in mm) – Subject to Alterations

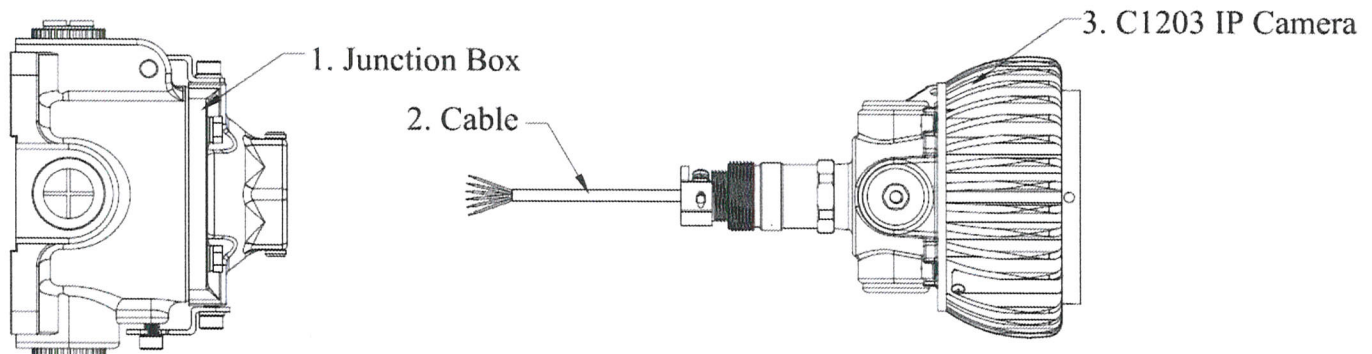


5. Assembly and Installation

5.1 Electrical Connection

Overview

1: Junction Box (Provide by customer)	2: Cable(Length Min 3m)	3: C1203 IP Camera
--	-------------------------	--------------------



Electrical Connection

1. Insert the cable (2) of the IP Camera into the Ex certified Junction Box or Control Box (1).
2. Fix and Introduce the wires of IP Camera with the terminal post or RJ45 Socket of Junction Box or Control Box.

Attention:

1. The Junction Box and Control Box must be pass the certification that approved by IECEx/ATEX.
2. The diameter of suitable cable for cable gland is 6.0 mm.



5.2 Mounting Bracket Installation

5.2.1 Two Position (Wall/Pendant) Adjustable Trunnion Mounting Bracket (WHT)

- ☞ The mount bracket is for the use of both Wall mount (Figure 1) and Pendant mount (Figure 2).
- ☞ Position the bracket holders and fix it by means of the provided M8 screws, 61.0 kgf-cm.
- ☞ Secure the (Wall/ Pendant) mounting bracket to the structure by using four fasteners (not provided).
- ☞ The angle of IP Camera fixture can be adjusted.

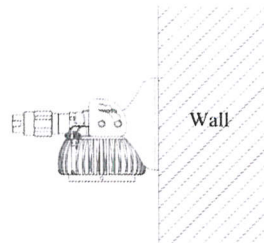


Figure 1

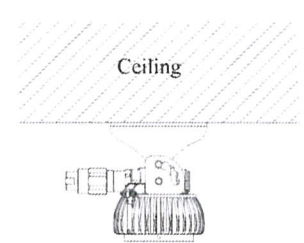


Figure 2

5.2.2 Straight pendant electrical tube mounting (P90)

- ☞ The mounting type is for the use of Straight electrical tube mounting (Figure 3).
- ☞ Straight electrical tube mounting thread is NPT 1/2".
- ☞ Thread the tube mounting on conduit and torque until wrench-tight as requirement, 1850 kgf-cm.

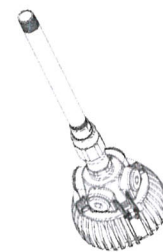
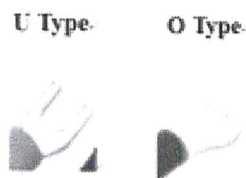


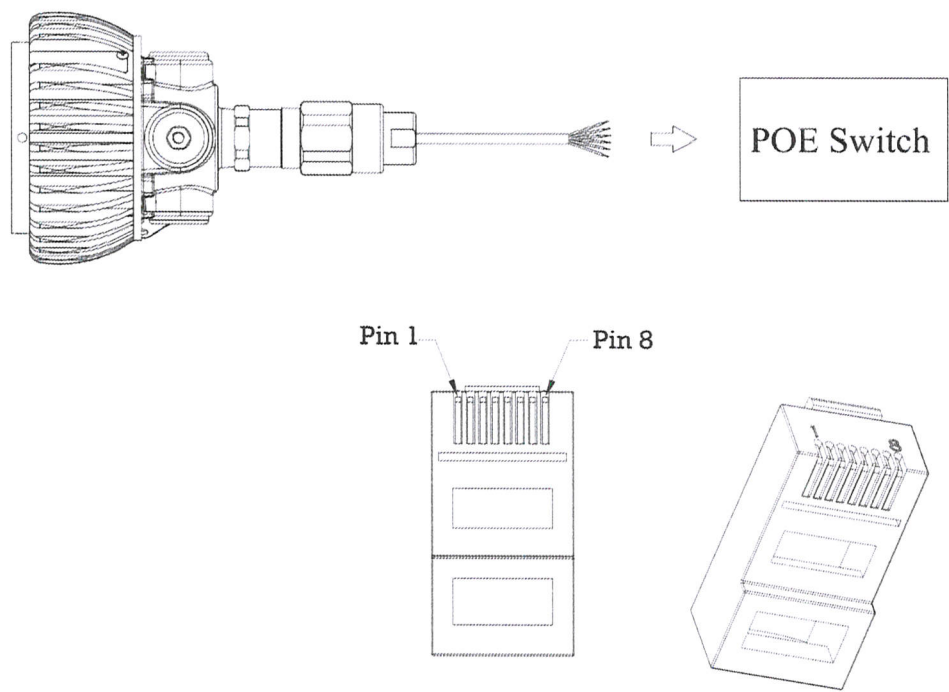
Figure 3

5.3 Ground wire

- ☞ The external earth ground wire installation and terminal type as show the right pictures.
- ☞ Ground wire cross-sectional area=4mm² , max current=1.0A; @V=110Vac-10%.
- ☞ Both ground screw and washer material is stainless steel.
- ☞ Screw hole spec: M4.
- ☞ Torque requirement: 7.0 kgf.cm.
- ☞ Ensure wire is tied assured.



5.4 IP Cameras connection



Pin	1	2	3	4	5	6	7	8
Color	White/ Orange	Orange	White/ Green		White/ Blue	Green	White/ Brown	

5.5 Putting into Service

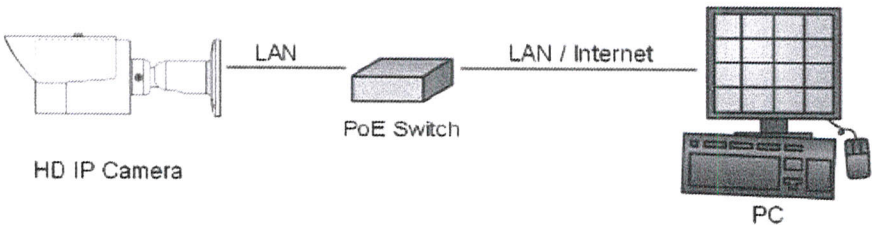
Before putting into operating, it's necessary to ensure that:

- 1. The IP Camera is correctly installed.
- 2. The RJ45 must be connected to POE Switch.
- 3. The cable has been inserted correctly.

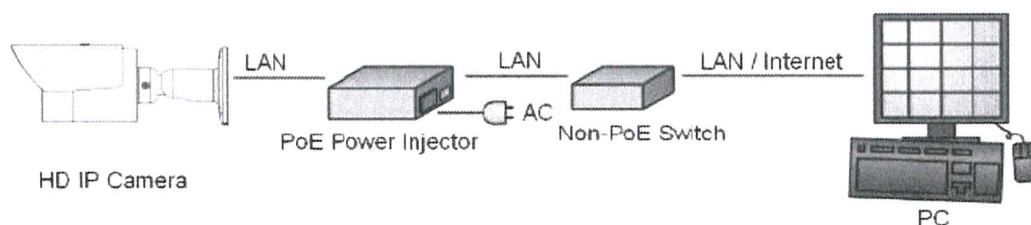
6. IP Cameras Setting

6.1 System Architectures

To connect HD IP cameras to the network, please follow one of the system architectures:
6.2.1 Use a PoE network switch to connect to the network.



6.1.2 Use a PoE power injector and a network switch to connect to the network.



6.2 Emergency Factory Default

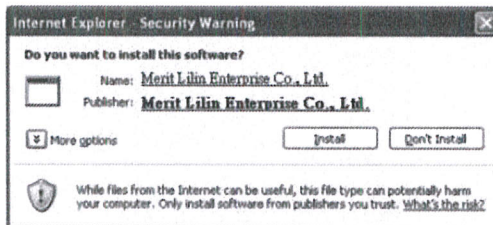
- ☞ Search for the IP device using the IPScan software.(For your convenience, the IP address will revert to the default setting of 192.168.0.200.)
- ☞ Start the IP device via an Internet browser.
- ☞ Enter the default username and password to operate.

6.3 Before Accessing IP Cameras

Before accessing the IP camera, make sure that the cameras RJ-45 network, audio, and power cables are properly connected. To set the IP address, consult your network administrator for an available IP address. The default IP address for each IP camera is 192.168.0.200. Users can use the default IP address for verifying the camera's network connection.

6.4 Software Requirements

Merit LILIN Universal ActiveX software components are required for web interface display of MJPEG or H.264 Full HD video. When you log in to the IP camera using Internet Explorer, a security warning dialog box will prompt the installation of the LILIN Universal ActiveX. Click Install to download and install the required software.



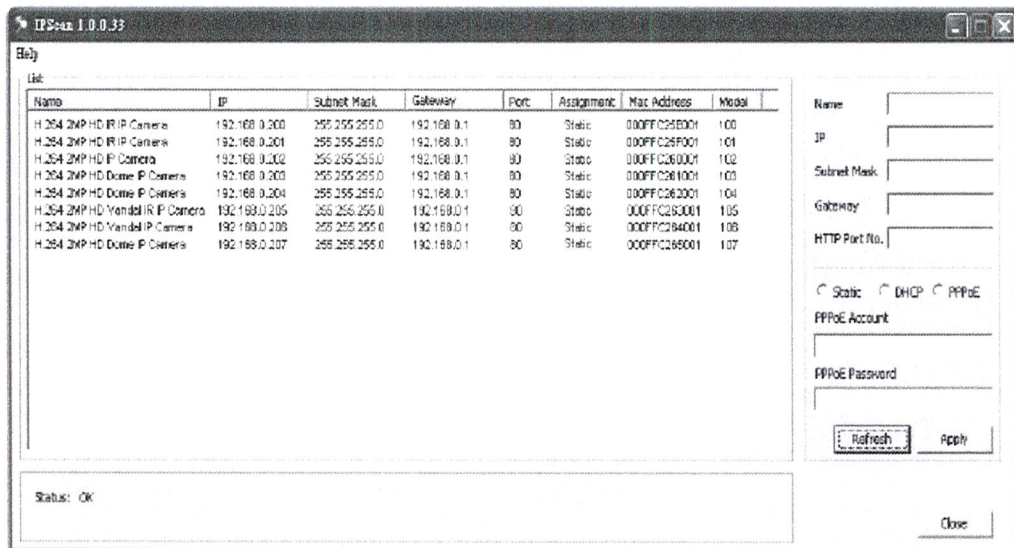
6.5 Configuring IP Addresses with IPScan Software

6.5.1 To configure an IP address using the IP scan tool, you can copy the IPScan software from the installation CD, and paste to your computer. Alternatively, you can execute the IPScan software from the installation CD, or download the software from the Merit LILIN website (www.meritlilin.com).

6.5.2 To change the settings of the IP address, subnet mask, gateway, or HTTP port, you can follow the steps below:

- ☞ Run the IPScan software.
- ☞ Click Refresh. All available devices should be listed in the device list.
- ☞ Select your device from the list provided.
- ☞ Change the IP address, subnet mask, gateway, or HTTP port for the IP camera.
- ☞ Click Apply to submit the settings.
- ☞ Click Refresh to verify the settings.





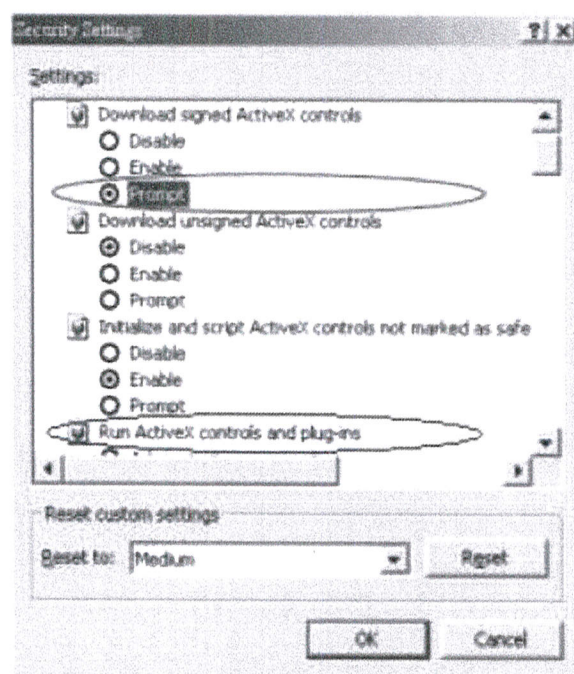
6.6 Configuring IP Addresses via Web Interface

To change an IP address via web interface, type the default IP address (192.168.0.200) in the Internet browser and follow the steps below:

- ☞ Login to the IP camera by the default username and default password .
- ☞ Click Basic Mode configuration hyperlink.
- ☞ Click Network->General hyperlink.
- ☞ Change the IP address, subnet mask, gateway, or HTTP port for the IP camera.
- ☞ Click Submit to verify the settings.

6.7 Internet Browser Settings & Application Required

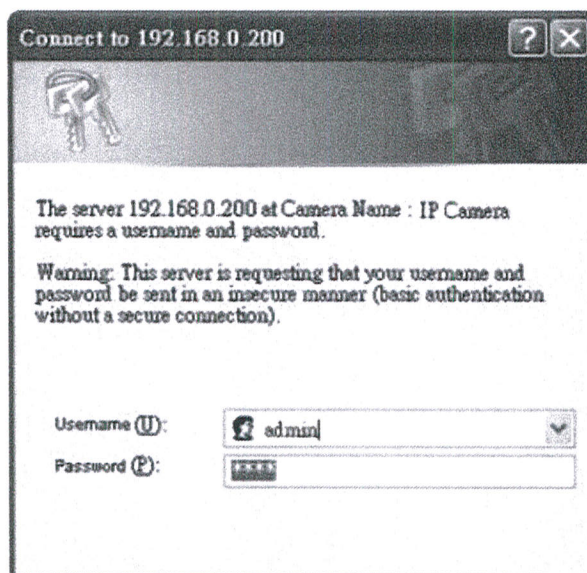
Make sure your Internet browser allows the signed ActiveX plug-in to work on your computer. Set “Download Signed ActiveX plug-in controls” to “Prompt” and “Run ActiveX control and plug-in” to “Enable”. You can set this option via Internet Explorer-> Tools-> Options-> Security Settings.



Once complete, you can access the IP cameras live video by entering the default IP address via your Internet browser. As the security warning dialog box appears, click OK to download the ActiveX directly from the IP camera.

6.8 Login

There are two levels of user authentication, including admin and guest, that can access the IP camera. Administrator is authorized to reset basic mode settings and see live video, while the guest is allowed to see only live video.



The default usernames and passwords are as follows:

	Administrator
Username	Admin
Password	pass

To logon the IP camera, please type username and password in logon HTML page and click on Submit button to enter the system.

7. Maintenance

WARNING

- ▶ To avoid dangers due to energized parts, all connections and wiring must be disconnected from the power supply. Secure the connections against unauthorized activation.
- ▶ To avoid risk of burn to hands, let the housing, the cable gland and the protective glass cool down for approximate 30 minutes before touching them.
- ▶ Maintenance work is not permitted on flameproof enclosures. Repairs are only to be carried out by the manufacturer. Unauthorized repair shall cause the manufacturer's liability and warranty expires.

Regular Maintenance

- ☞ Consult the relevant national regulations (e.g. IEC/EN 60079-17) to determine the type and extent of inspections.
- ☞ Arrange the plan of regular inspection with the equipment, one time per 3-month at least, so that any defects in the equipment which may be anticipated are promptly detected.

To check as part of the maintenance schedule as following:

- ☞ Cracks or damages on the glass cover and/or on the enclosure.
- ☞ Condition of the connecting cables.
- ☞ Screws of the mounting bracket are tightened.

8. Accessories and Spare Parts

WARNING

Use only original THT-EX accessories and spare parts. For accessories and spare parts, see data sheet at www.tht-ex.com.

9. Transport, Storage and Disposal

- ☞ Transport and storage is only allowed in the original packaging, on the way pointed out on the carton box.
- ☞ Transport – Shock-free in its original carton, do not drop, and handle carefully.
- ☞ Store – Store in a dry place in its original packaging.
- ☞ Disposal – Ensure environmentally friendly disposal of all components according to the legal regulations.

