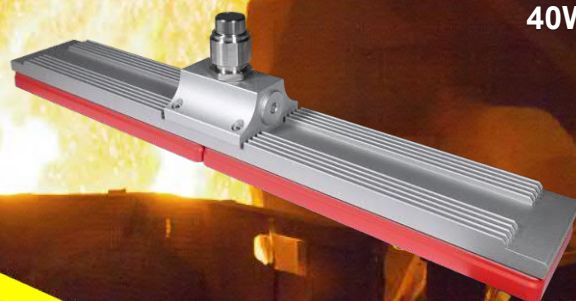




L1319



40W



Net Weight: 7.4 kg (16.3 lb)

# High Humidity & Heat Resistant LED Light

- ★ AC LED Driver-less Technology
- ★ Intended for Use in High Ambient Temperature Environments

## High Ambient Temperature:

+65°C ~ +100°C (+149°F ~ +212°F)



## Applications:

- Pulp & Paper (Cooking and Drying Area)
- Glass Factory (Processing Area)
- Metal Forging or Metal Recycling Plant (Heating or Forging Area)
- Oil & Gas (Furnace Towers or Compressor Rooms)
- Garbage Processing Plant (Burning Area)
- Coal Power Plant (Burning Area)
- Gas Turbine Power Plant (Gas Turbine Area)
- Painting Factory (Drying Area)
- Winery (Distillation Chamber)
- Textile (Dyeing and Finishing Area)
- Food Process (Heating, Cooking or Baking Area)

## Standards:

UL 844  
UL 1598  
UL 8750  
IEC 60079  
EN 60079  
CSA C22.2 No.250.0

## Protection:

IP67

### Electrical:

Rated Voltage (±10%)	120V / 220V / 277V AC	
Watts (±10%)	40W	
Amps	120V: 0.33A / 220V: 0.18A / 277V: 0.14A	Amp = Watt. / Volt.
Power Factor	$\cos \geq 0.9$	
Frequency	50 / 60 Hz	
LED Service Life	60,000 hrs*	*L70 at 55°C Ambient Temperature
Warranty	1 year warranty without warranting lumen depreciation.	

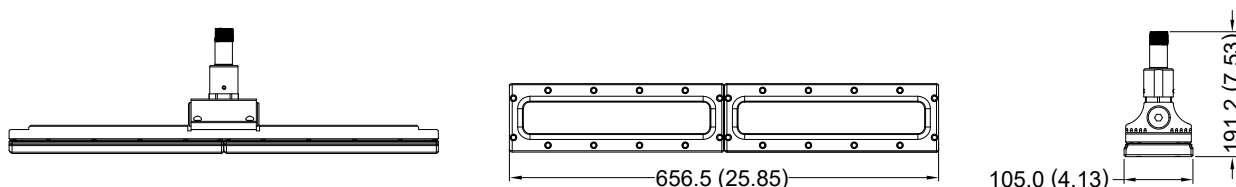
### Mechanical:

Enclosure	Aluminum Alloy
Glass	Tempered Glass
Cable Gland	Stainless Steel
Entrance Thread	1 x NPT 3/4"

### Optical:

Color of LED Light	5000K (Cool White)
CRI	$\geq 70$
Beam Angle	X-116° / Y-113°
Lm / W (±10%)	115 lm/w
Lumen (±10%)	4600 lm

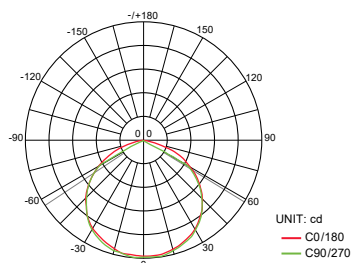
### Dimension: In mm (inches)



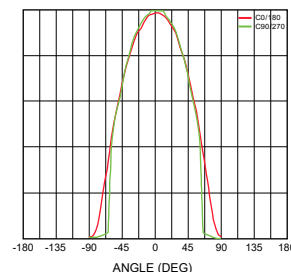
### Optical Report:

SMD test

Polar Luminous  
Intensity Distribution

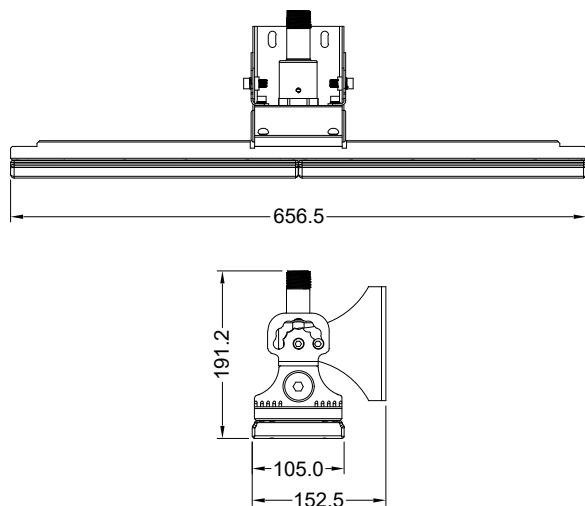


Luminous  
Intensity Distribution Diagram



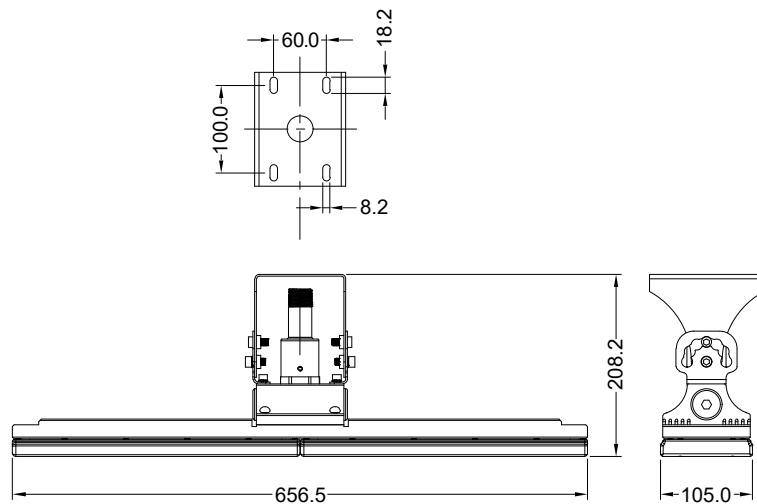
### Mounting Option & Dimension : In mm (inches)

Wall Mount 90° [WHT (W90)]



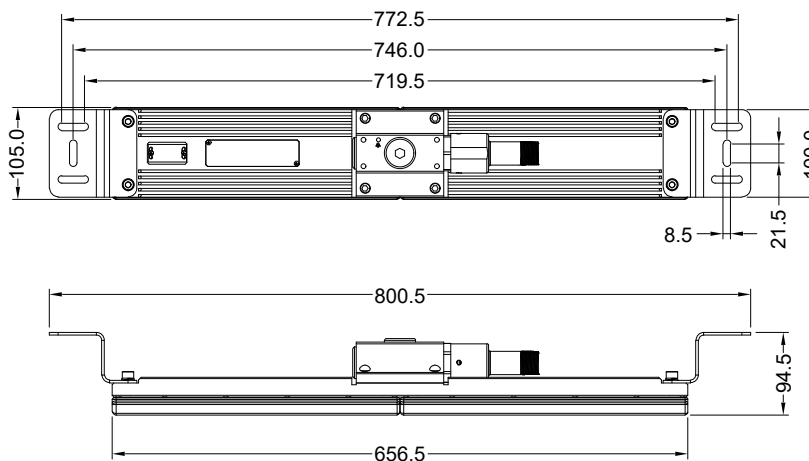
7.7 kg (17.0 lb)

Hanging Mount 90° [WHT (H90)]



7.7 kg (17.0 lb)

Ceiling (C90)



7.9 kg (17.4 lb)