

HazLoc LED LUMINAIRE

Installation and Maintenance Manual

HazLoc L1102A



Top Hi-Tech Co., Ltd.
9F., No. 1, Zhongshang Rd.,
Tucheng District,
New Taipei City, 236 Taiwan

Website: www.tht-ex.com
TEL: +886 2 22671234
FAX: +886 2 22691166
e-mail: sales@tht-ex.com

Pub. Code: 201412EL1102AUS01
Subject to alterations

1. General Information

HazLoc L1102A LED Luminaires are suitable for use in the following hazardous (classified) areas as defined by the National Electrical Code (NEC) and Canadian Electrical Code (CEC):

- Class I, Division 2, Groups A, B, C, D
- Wet Locations (UL 1598)

Refer to the luminaire nameplate for specific classification information, maximum ambient temperature suitability and corresponding operating temperature (T-Code).

HazLoc L1102A LED Luminaire is designed for using in indoors and outdoors environment.

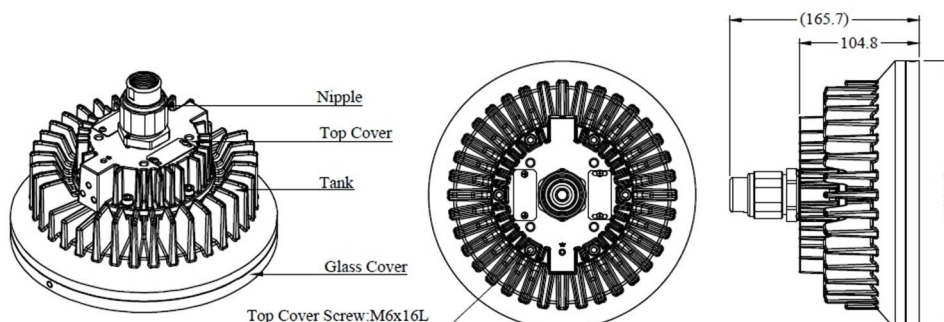


Rated Voltage (DCOB): 120/277/480 Vac, 50 & 60 Hz
Ambient Temperature Range: -40°C ~ +40°C

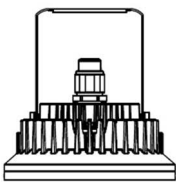
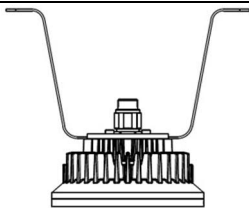
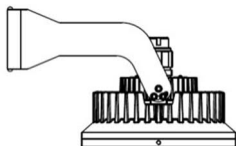
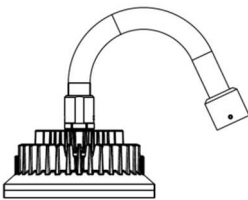
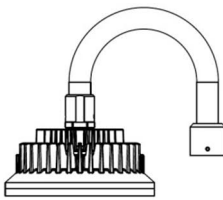
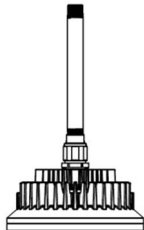
WARNING

- ▶ To avoid the risk of fire, explosion or electric shock, this product should be installed, inspected and maintained by a qualified electrician only, in accordance with all applicable codes and regulations.
- ▶ To avoid electric shock:
 - ✓ Be certain electrical power is OFF before and during installation and maintenance.
 - ✓ Luminaire must be supplied by a wiring system with an equipment grounding conductor.
- ▶ To avoid explosion:
 - ✓ Make sure that the supply voltage is the same as the luminaire voltage.
 - ✓ Do not install where the marked operating temperatures exceed the ignition temperature of the hazardous atmosphere.
 - ✓ Do not operate in ambient temperatures above those indicated on the luminaire nameplate.
 - ✓ All gasket seals must be clean and undamaged.
 - ✓ Use proper supply wiring as specified on the luminaire nameplate.
 - ✓ Before dismounting, electrical power to the luminaire must be turned off. Keep tightly closed when in operation.
- ▶ To avoid burning hands, ensure the luminaire is cool when performing maintenance.
- ▶ For the CCTV operation, it must use the POE ready connection or POE injector module if unavailable.

2. Dimensions (All Dimensions in mm) – Subject to Alterations



3. Technical Data

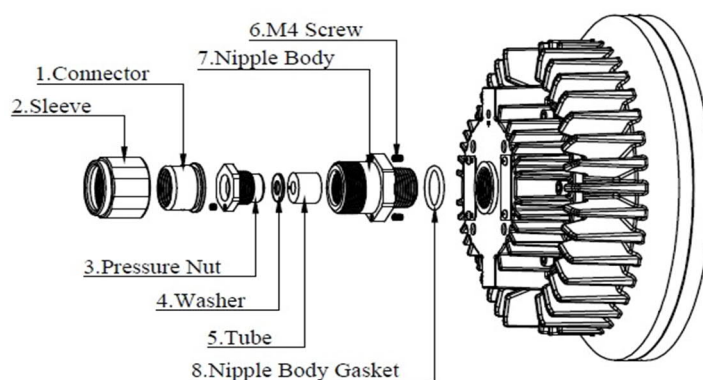
Item	Description		
Rated Voltage	120/277/480 Vac, 50 & 60 Hz (Note information on type label)		
Power Factor	$\cos \phi \geq 0.9$		
Ambient Temperate Range	-40°C ~ +40°C		
Material Enclosure Glass	Aluminum alloy Temperature-resistant pressed glass		
LED Service Life	60,000 hrs		
Mounting Type / Weight	Pendant Mounting	Ceiling Mounting	Wall Mounting
			
	5.5 kg	7.1 kg	6.3 kg
	Bending Electrical Tube Mounting 25°	Bending Electrical Tube Mounting 90°	Straight Electrical Tube Mounting 90°
			
	5.9 kg	6.6 kg	5.2 kg

4. Assembly and Installation

4.1 Electrical Connection

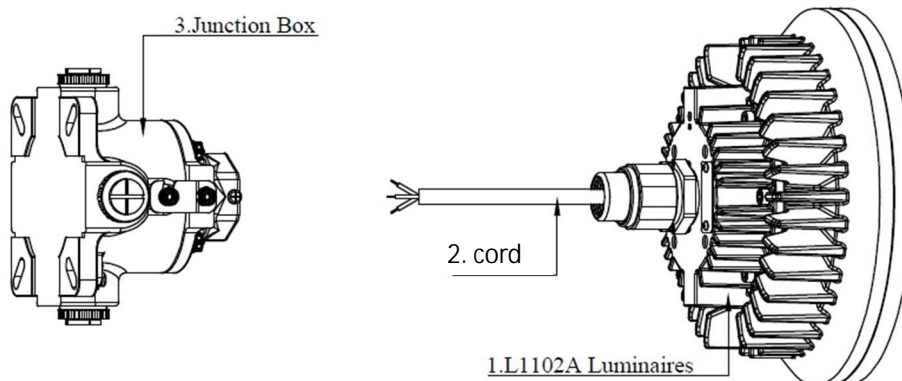
Overview of Connection Base

1: Connector	2: Sleeve	3: Pressure Nut	4: Washer
5: Tube	6: M4 Screw	7: Nipple Body	8: Nipple Body Gasket



Overview of Electrical Connection

1: L1102A Luminaire	2: Cord (Length: min, 24 inches)	3: Junction Box (Provide by customer)
---------------------	-------------------------------------	---



1. For luminaire model with suffix “C90”, “W25”, “W90”, “H25” and “H90”: Insert the cord (2) through the conduit (not shown, provide in the field) into the Junction Box (3) (provide in the field).
2. For luminaire model with suffix “S25” and “S90” and “P90”: Insert the cord (2) through the integral mounting bracket and then through the conduit (not shown, provide in the field) into the Junction Box (3) (provide in the field).
3. Fix and Introduce the wires of luminary with the terminal post of Junction Box (White-wire connects to Neutral; Red-wire connects to Live; Green-wire connects to Ground.)

4.2 Mounting Bracket Installation

4.2.1 Wall Mounting Bracket

- ☞ The mounting bracket is for the use of wall mounting.
- ☞ Position the bracket holders and fix it by means of the provided M8 screws, 61.0 kgf-cm. (Figure 1)
- ☞ Secure the wall mounting bracket to the structure by using four fasteners (not provided). (Figure 2)
- ☞ The lighting can be adjusted up and down by 25°.

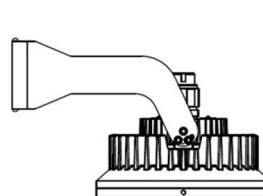


Figure 1

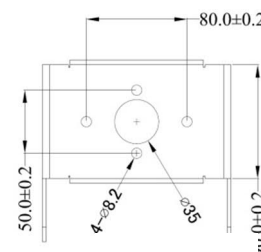


Figure 2

4.2.2 Ceiling Mounting Bracket

- ☞ The mounting bracket is for the use of ceiling mounting.
- ☞ Position the bracket holders and fix it by means of the provided M8 screws, 61.0 kgf-cm. (Figure 3)
- ☞ Secure the wall mounting bracket to the structure by using four fasteners (not provided). (Figure 4)

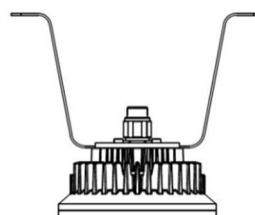


Figure 3

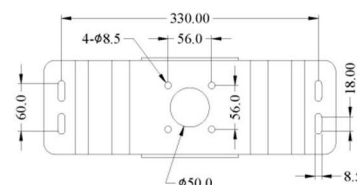


Figure 4

4.2.3 Pendant mounting Bracket

- ☞ The mounting bracket is for the use of hanging mounting.
- ☞ Position the bracket holders and fix it by means of the provided M8 screws, 61.0 kgf-cm. (Figure 5)
- ☞ Secure the wall mounting bracket to the structure by using two fasteners (not provided). (Figure 6)
- ☞ The lighting can be adjusted by 25°.

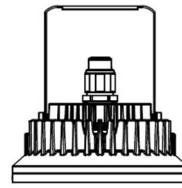


Figure 5

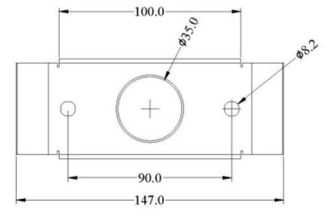


Figure 6

4.2.4 Bending Electrical Tube mounting

- ☞ Supplement for the Item 5.1 – Electrical Connection. The thread of entry hole of Top Cover is NPT 3/4”.
- ☞ Introduce the wires of the cord by attached closed-end-terminals as indicated in Item 5.1 – Electrical Connection.
- ☞ The bending electrical tube, one end secured to Nipple Body of Nipple (Adapter) Assembly by integral M35 female threads and with a setscrew; the other end provided with 1-1/2” NPT female threads for connecting with conduit by AHJ.
- ☞ Thread the tube mounting on conduit and torque until wrench-tight with 6600 kgf-cm.
- ☞ Tighten tube locking setscrew to conduit, 1.0 N-m. (Figures 7, 8)

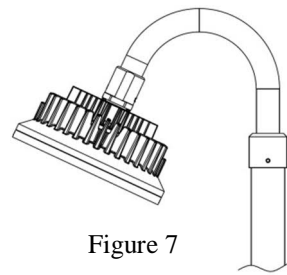


Figure 7

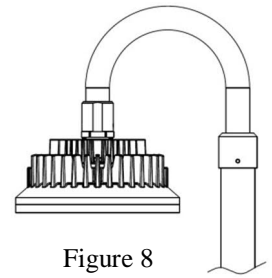


Figure 8

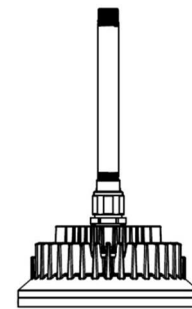


Figure 9

4.2.5 Straight Electrical Tube Mounting

- ☞ Supplement for the Item 5.1 – Electrical Connection. The thread of entry hole of Top Cover is NPT 3/4”.
- ☞ Introduce the wires of the cord by attached closed-end-terminals as indicated in Item 5.1 – Electrical Connection.
- ☞ The straight electric tube, one end secured to Connector of Nipple (Adapter) Assembly by integral 3/4” NPT male threads and with a setscrew; the other end provided with 3/4” NPT male threads for connecting with conduit by AHJ.
- ☞ Thread the tube mounting on conduit and torque until wrench-tight with 1500 kgf-cm.
- ☞ Tighten tube locking setscrew to conduit, 1.0 N-m. (Figure 9)

4.2.6 LED and CCTV connection

- ☞ The 18 # x 3C wires is intended for the LED power connection (see Figure 10)
- ☞ The 24# x 3P wire is intended for the UL LISTED POE (Max. 48V, 0.35A) connection (see Figure 10)
- ☞ Follow the assigned colors of the 24# x 3P wires for termination to the RJ45 Plug (see Figure 11)

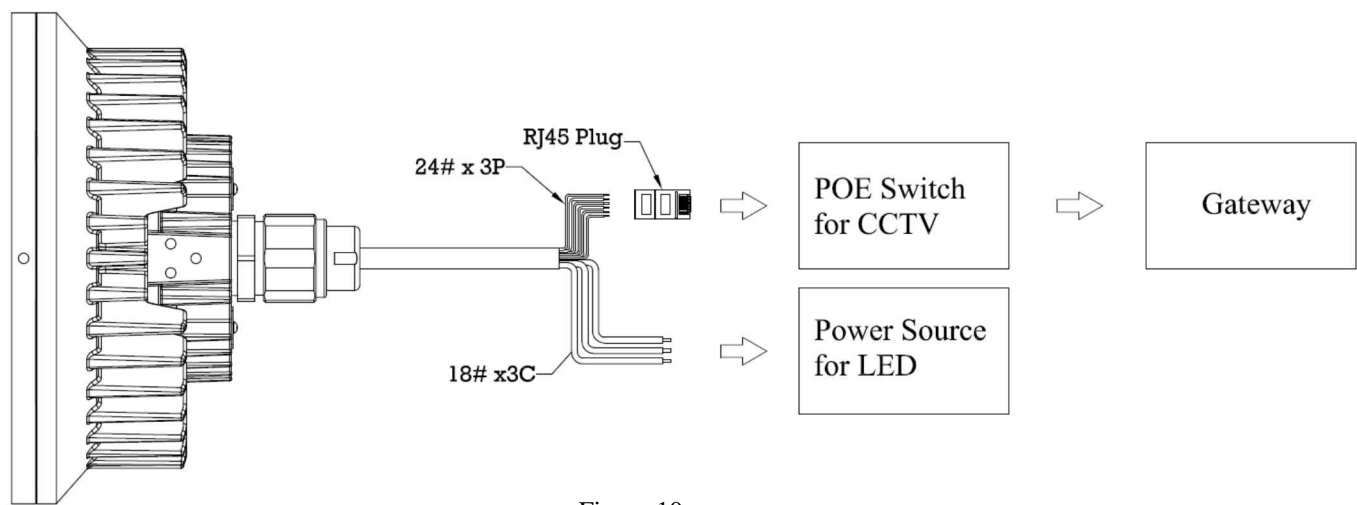


Figure 10

Pin	1	2	3	4	5	6	7	8
Color	White/ Orange	Orange	White/ Green		White/ Blue	Green	Blue	

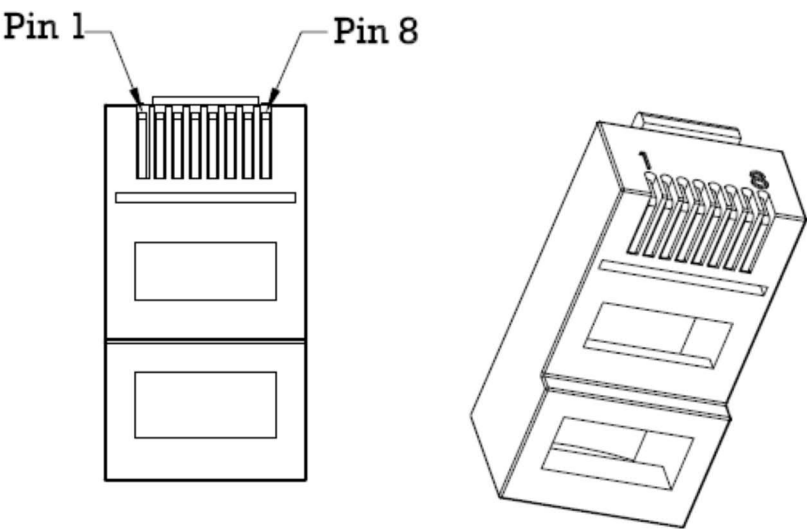


Figure 11

4.3 Putting into Service

Before putting into operating, it's necessary to ensure that:

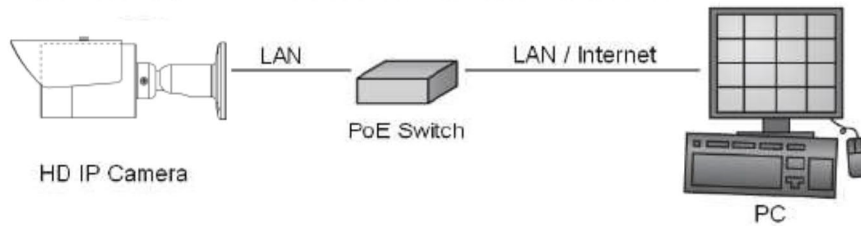
- ☞ the lighting is correctly installed.
- ☞ the connection has been correctly made.
- ☞ the field wiring has been inserted correctly.

5. IP Cameras Setting

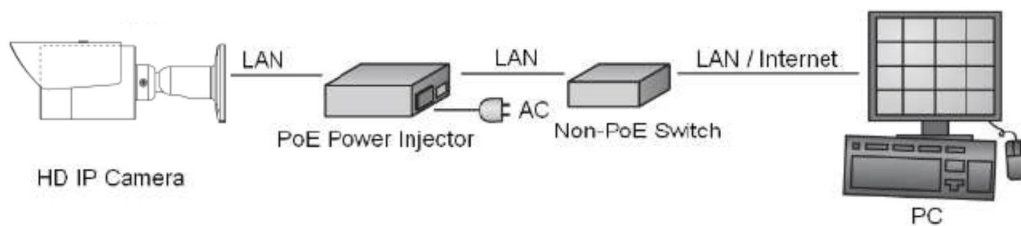
5.1 System Architectures

To connect HD IP cameras to the network, please follow one of the system architectures:

5.1.1 Use a PoE network switch to connect to the network.



5.1.2 Use a PoE power injector and a network switch to connect to the network



5.2 Emergency Factory Default

- ☞ Search for the IP device using the IPScan software.(For your convenience, the IP address will revert to the default setting of 192.168.0.200.)
- ☞ Start the IP device via an Internet browser.
- ☞ Enter the default username 'admin' and password 'pass' to operate.

5.3 Before Accessing IP Cameras

Before accessing the IP camera, make sure that the cameras RJ-45 network, audio, and power cables are properly connected. To set the IP address, consult your network administrator for an available IP address. The default IP address for each IP camera is 192.168.0.200. Users can use the default IP address for verifying the camera's network connection

5.4 Software Requirements

Merit LILIN Universal ActiveX software components are required for web interface display of MJPEG or H.264 Full HD video. When you log in to the IP camera using Internet Explorer, a security warning dialog box will prompt the installation of the LILIN Universal ActiveX. Click Install to download and install the required software.

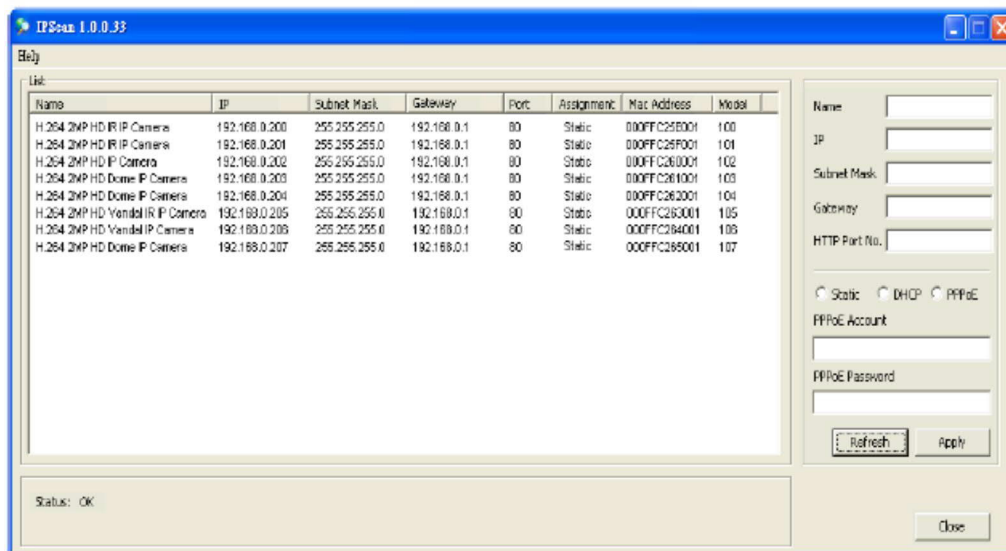
5.5 Configuring IP Addresses with IPScan Software

5.5.1 To configure an IP address using the IP scan tool, you can copy the IPScan software from the installation CD, and paste to your computer. Alternatively, you can execute the IPScan software from the installation CD, or download the software from the Merit LILIN website (www.meritlilin.com).

- ☞ Run the IPScan software.
- ☞ Click Refresh. All available devices should be listed in the device list.
- ☞ Select your device from the list provided.
- ☞ Change the IP address, subnet mask, gateway, or HTTP port for the IP camera.
- ☞ Click Apply to submit the settings.
- ☞ Click Refresh to verify the settings.

5.5.2 To change the settings of the IP address, subnet mask, gateway, or HTTP port, you can follow the steps below:

- ☞ Run the IPScan software.
- ☞ Click Refresh. All available devices should be listed in the device list.
- ☞ Select your device from the list provided.
- ☞ Change the IP address, subnet mask, gateway, or HTTP port for the IP camera.
- ☞ Click Apply to submit the settings.
- ☞ Click Refresh to verify the settings.



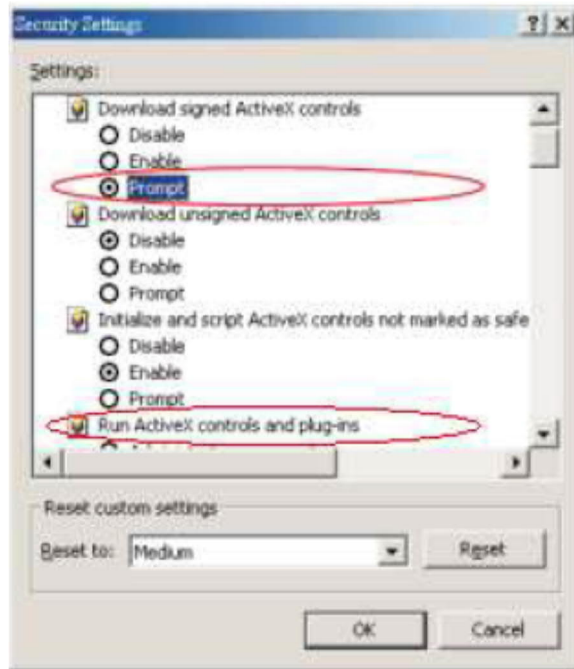
5.6 Configuring IP Addresses via Web Interface

To change an IP address via web interface, type the default IP address (192.168.0.200) in the Internet browser and follow the steps below:

- ☞ Login to the IP camera by the default username 'admin' and default password 'pass'.
- ☞ Click Basic Mode configuration hyperlink.
- ☞ Click Network->General hyperlink.
- ☞ Change the IP address, subnet mask, gateway, or HTTP port for the IP camera.
- ☞ Click Submit to verify the settings.

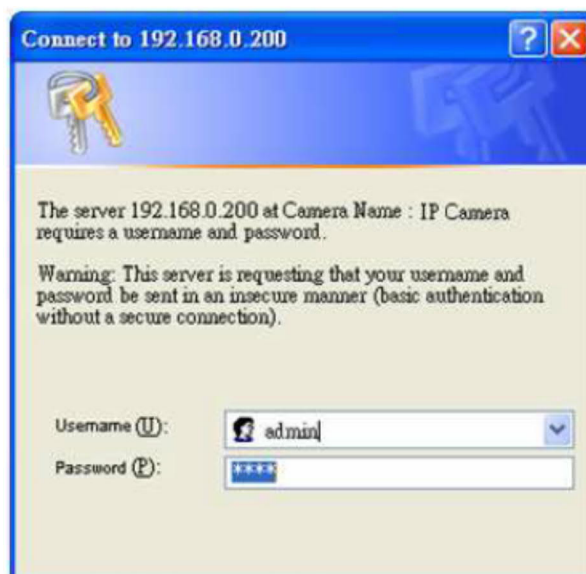
5.7 Internet Browser Settings & Application Required

Make sure your Internet browser allows the signed ActiveX plug-in to work on your computer. Set “Download Signed ActiveX plug-in controls” to “Prompt” and “Run ActiveX control and plug-in” to “Enable”. You can set this option via Internet Explorer-> Tools-> Options-> Security Settings.



5.8 Login

There are two levels of user authentication, including admin and guest, that can access the IP camera. Administrator is authorized to reset basic mode settings and see live video, while the guest is allowed to see only live video.



The default usernames and passwords are as follows:

	Administrator
Username	Admin
Password	pass

To logon the IP camera, please type username and password in logon HTML page and click on Submit button to enter the system.

6. Maintenance

- ▶ To avoid personal injury, disconnect power to the light and allow the unit to cool down before performing maintenance.
- ▶ Perform visual, electrical, and mechanical inspections on a regular basis. The environment and frequency of use should determine this. However, it is recommended that checks be made at least once a year. Frequency of use and environment should determine this. It is recommended to follow an Electrical Preventive Maintenance Program as described in the National Fire Protection Association Bulletin NFPA No. 70B: Recommended Practice for Electrical Equipment Maintenance.
- ▶ The lens should be cleaned periodically to ensure continued lighting performance. Clean the lens with a clean, damp, non-abrasive, lint-free cloth. If this is not sufficient, use a mild soap or a liquid cleaner. Do not use an abrasive, strong alkaline or acid cleaner as damage may occur.
- ▶ Inspect the cooling fins on the luminaire to ensure that they are free of any contamination (i.e. excessive dust build-up). Clean with a non-abrasive cloth if needed.
- ▶ Electrically check to make sure that all connections are clean and tight.
- ▶ Mechanically check that all parts are properly assembled.

7. Transport, Storage and Disposal

- ▶ Transport and storage is only allowed in the original packaging, on the way pointed out on the carton box.
- ▶ Transport – Shock-free in its original carton, do not drop, and handle carefully.
- ▶ Store – Store in a dry place in its original packaging.
- ▶ Disposal – Ensure environmentally friendly disposal of all components according to the legal regulations.