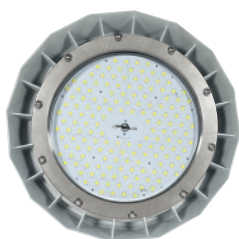
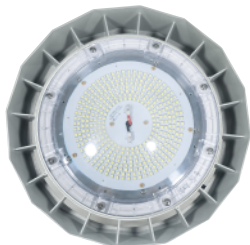


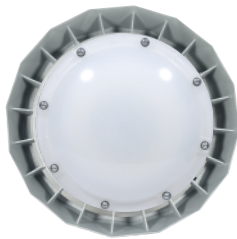
L2302 Series Hazardous Locations LED Light



L2302A
GLASS



L2302B
Clear PC Cover



L2302C
Matte PC Cover



Protection

- Class I, Division 2,
Group A, B, C, D

Standards

- UL 844
- UL 1598 Luminaires
- UL 8750
- CSA C22.2 No. 137-18

Net Weight: 5.5 kg (12.1 lb)

Technical Data

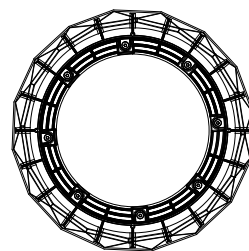
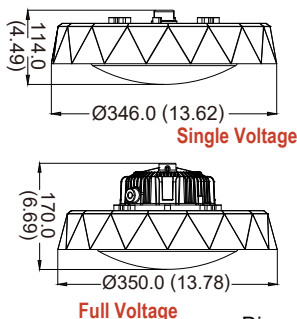
L2302A / L2302B / L2302C

	Single Voltage		Full Voltage
Rated Voltage (±10%)	110 / 120 / 220 / 230 / 277 Vac		100~ 277 Vac
Wattage (±10%) <small>* Please refer to red numbering for the corresponding T code</small>	180W / 200W / 220W / 240W / 250W	40W / 50W / 60W ① 65W / 75W / 95W ② 120W / 140W / 150W ③	30W~100W ④ 110W~150W ⑤ 160W~200W ⑥ 210W / 220W ⑦
Amps	0.65A~2.27A	0.14A~1.36A	0.11A~2.2A
Color of LED Light	3000K (Warm White) 5000K (Cool White) Green Light	3000K (Warm White) 5000K (Cool White)	3000K (Warm White) 5000K (Cool White) Green Light
Ambient Temperature	-20°C ~ +43°C, T3C	-20°C ~ +77°C, T3C ① -20°C ~ +66°C, T4 ② -20°C ~ +55°C, T3C ③	-20°C ~ +55°C, T4A ④ -20°C ~ +55°C, T3C ⑤ -20°C ~ +50°C, T3C ⑥ -20°C ~ +43°C, T3C ⑦

Power Factor	cos≥0.9		
CRI	Cool White≥70 / Warm White≥80		
Lm / W (±10%)	Clear PC Cover: 140 lm/w ; Matte PC Cover: 125 lm/w (Greenlight additionally offers)		
Beam Angle	X-110° / Y-110°		
Frequency	50 / 60 Hz		
Degree of Protection	IP67 / NEMA 6		
Material	<ul style="list-style-type: none">• Enclosure• Lampshade	Aluminum alloy Glass / PC	
LED Service Life	60,000 hrs		
Entrance Thread	NPT 3/4"		

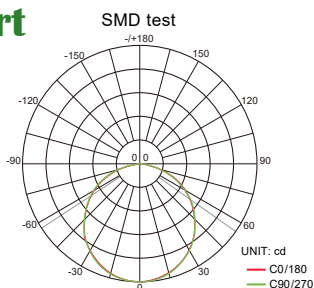
Technical drawing of the Single Voltage light fixture. The top view shows a circular base with a diameter of Ø346.0 (13.62) and a height of 114.0 (4.49). The side view shows a height of 170.0 (6.69). The fixture is labeled "Single Voltage".

Technical drawing of the Dual Voltage light fixture. The top view shows a circular base with a diameter of Ø346.0 (13.62) and a height of 114.0 (4.49). The side view shows a height of 170.0 (6.69). The fixture is labeled "Dual Voltage".

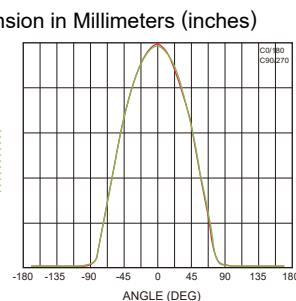


Optical Report

Polar Luminous Intensity Distribution



Luminous Intensity Distribution Diagram



Model Code

THT	H	2302	A	N	K	C	9	25	WHT(W90)
			①			②	③	④	⑤

① Series type

A = With Glass
B = With Clear PC
C = With Matte PC

② Designates CCT of LED

C = Cool white
W = Warm white
G = Green

④ Designates wattage rating of the luminaire

C0=30W, D0=40W, E0=50W, F0=60W
F5=65W, G0=70W, G5=75W, H0=80W
I0=90W, I5=95W, J0=100W, K0=110W
L0=120W, M0=130W, N0=140W, P0=150W
Q0=160W, R0=170W, S0=180W, T0=190W
U0=200W, V0=210W, W0=220W, X0=230W
Y0=240W, 25=250W

* Full volt products do not include 65W, 75W, 95W

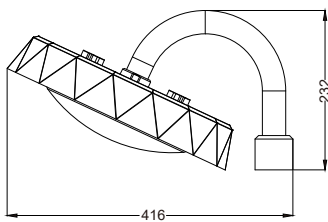
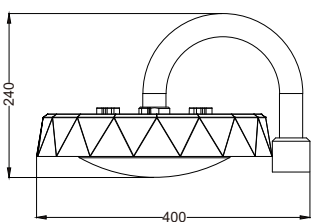
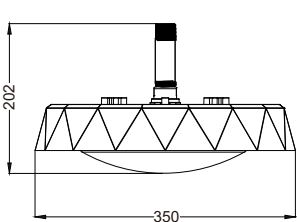
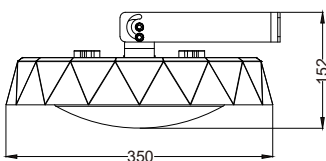
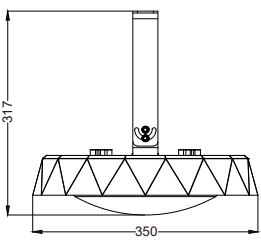
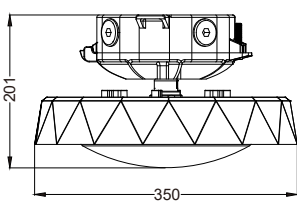
③ Designates voltage of LED module

1=110 Vac, 2=220 Vac, 6=120 Vac
9=277 Vac, D=230 Vac, H=100~277 Vac

⑤ Mounting Bracket Type

S25/90=Bending Electrical Tube
P90=Straight Electrical Tube
WHT(W90)=Wall Mount
WHT(H90)=Pendant Mount
PAN=Pan Mounting - C Brand
C=Ceiling Mount

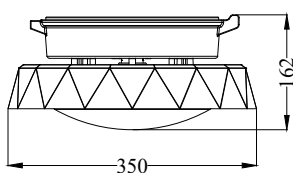
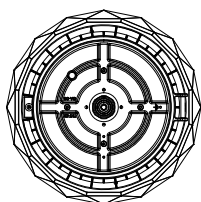
Mounting Option & Dimensions (All in mm)

<p>Bending Electrical Tube 25°(S25)</p> 	<p>Bending Electrical Tube 90°(S90)</p> 	<p>Pendant Mount(P90)</p> 
<p>Wall Mount [WHT(W90)]</p> 	<p>Hanging Mount [WHT(H90)]</p> 	<p>Ceiling Mount (C)</p> 

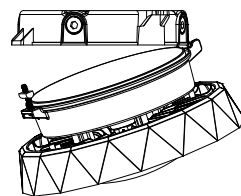
Pan Mounting Option & Dimensions (All in mm)

Retrofit Kit for C Brand

(PAN)



Installation Diagram



*Top hat is not included when placing order for retrofit pan.